

Recombinant Full Length Human MMP9 Protein, C-Flag-tagged

Cat. No. MMP9-1403HFL **Lot. No.** (See product label)

SPECIFICATION

Product Overview	Recombinant Full Length Human MMP9 Protein, fused to Flag-tag at C-terminus, was expressed in Mammalian cells.
Species	Human
Source	Mammalian Cells
Description	<p>Proteins of the matrix metalloproteinase (MMP) family are involved in the breakdown of extracellular matrix in normal physiological processes, such as embryonic development, reproduction, and tissue remodeling, as well as in disease processes, such as arthritis and metastasis. Most MMP's are secreted as inactive proproteins which are activated when cleaved by extracellular proteinases. The enzyme encoded by this gene degrades type IV and V collagens. Studies in rhesus monkeys suggest that the enzyme is involved in IL-8-induced mobilization of hematopoietic progenitor cells from bone marrow, and murine studies suggest a role in tumor-associated tissue remodeling.</p>
Form	25 mM Tris HCl, pH 7.3, 100 mM glycine, 10% glycerol.
Molecular Mass	78.3 kDa
AA Sequence	<p>MSLWQPLVLVLLVLGCCFAAPRQRQSTLVLFPGDLRTNLTDRQLAEEYLYRYGYTR VAEMRGESKSLGPA LLLLQKQLSLPETGELDSATLKAMRTPRCGVPDLGRFQTFEG DLKWHHHNITYWIQNYSEDLPRAVIDDA FARAFALWSAVTPLTFTRVYSRDADIVIQF GVAEHGDGYFPDGDGKDLLAHAFPPGPGIQGDAHFDDDELW SLGKGVVVPTRFGN</p>

 Tel: 1-631-559-9269 1-516-512-3133

 Email: info@creative-biomart.com  Fax: 1-631-938-8127

 45-1 Ramsey Road, Shirley, NY 11967, USA

ADGAACHFPFIFEGRSYSACTTDGRSDGLPWCSTTANYDTDDRFGFCPSERLYTRD
 GNADGKPCQFPFIFQGSYSACTTDGRSDGYRWCATTANYDRDKLFGFCPTRADS
 TVMGGNSAGELCVFP FTFLGKEYSTCTSEGRGDGRLWCATTSNFSDKKGWFCP
 DQGYSLFLVAAHEFGHALGLDHSSVPEALMY PMYRFTEGPPLHKDDVNGIRHLYGP
 RPEPEPRPPTTTTPQPTAPPTVCPTGPPTVHPSERPTAGPTGPPS AGPTGPPTAGP
 STATTVPLSPVDDACNVNIFDAIAEIGNQLYLFKDGKYWRFSEGRGSRPQGPFLIADK
 W PALPRKLDVFEELSKLFFFSGRQVWVYTGASVLGPRRLDKLGLGADVAQVT
 GALRSGRGKMLLFSGR RLWRFDVKAQMVDPRSASEVDRMFPGVPLDTHDVFQYR
 EKAYFCQDRFYRRVSSRSELNQVDQVGYVTYD
 ILQCPEDTRTRPLEQKLISEEDLAANDILDYKDDDDKV

Purity	> 80% as determined by SDS-PAGE and Coomassie blue staining.
Stability	Stable for 12 months from the date of receipt of the product under proper storage and handling conditions. Avoid repeated freeze-thaw cycles.
Storage	Store at -80 centigrade.
Concentration	>50 ug/mL as determined by microplate BCA method.
Preparation	Recombinant protein was captured through anti-DDK affinity column followed by conventional chromatography steps.
Protein Families	Druggable Genome, Protease
Protein Pathways	Bladder cancer, Leukocyte transendothelial migration, Pathways in cancer
Full Length	Full L.

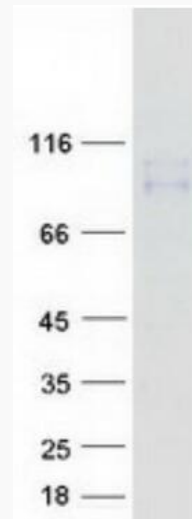
GENE INFORMATION

 Tel: 1-631-559-9269 1-516-512-3133

 Email: info@creative-biomart.com  Fax: 1-631-938-8127

 45-1 Ramsey Road, Shirley, NY 11967, USA

Gene Name	MMP9 matrix metalloproteinase 9 [Homo sapiens (human)]
Official Symbol	MMP9
Synonyms	GELB; CLG4B; MMP-9; MANDP2
Gene ID	4318
mRNA Refseq	NM_004994.3
Protein Refseq	NP_004985.2
MIM	120361
UniProt ID	P14780



Coomassie blue staining of purified MMP9 protein.

 Tel: 1-631-559-9269 1-516-512-3133

 Email: info@creative-biomart.com  Fax: 1-631-938-8127

 45-1 Ramsey Road, Shirley, NY 11967, USA