

Recombinant Cattle MMP9 protein, His & T7-tagged

Cat. No. MMP9-2792C Lot. No. (See product label)

SPECIFICATION

Product Overview	Recombinant Cattle MMP9 aa. (Ala225~Asp390 (Accession # P52176)) fused with N-terminal His & T7 tag was produced in E. coli cells.
Species	Cattle
Source	E.coli
ProteinLength	Ala225~Asp390
Form	Freeze-dried powder
Molecular Mass	Predicted Molecular Mass: 22.2kDa
Endotoxin	<1.0EU per 1g (determined by the LAL method)
Purity	>95%
Characteristic	The isoelectric point is 6.1.
Applications	SDS-PAGE; WB; ELISA; IP.
Stability	The thermal stability is described by the loss rate. The loss rate was determined by accelerated thermal degradation test, that is, incubate the protein at 37°C for 48h, and no obvious degradation and precipitation were observed. The loss rate is less than 5% within the expiration date under appropriate storage condition.

 Tel: 1-631-559-9269 1-516-512-3133

 Email: info@creative-biomart.com  Fax: 1-631-938-8127

 45-1 Ramsey Road, Shirley, NY 11967, USA

Storage	Avoid repeated freeze/thaw cycles. Store at 2-8°C for one month. Aliquot and store at -80°C for 12 months.
Storage buffer	Supplied as lyophilized form in PBS, pH7.4, containing 5% sucrose, 0.01% sarcosyl.
Reconstitution	Reconstitute in sterile PBS, pH7.2-pH7.4.

GENE INFORMATION

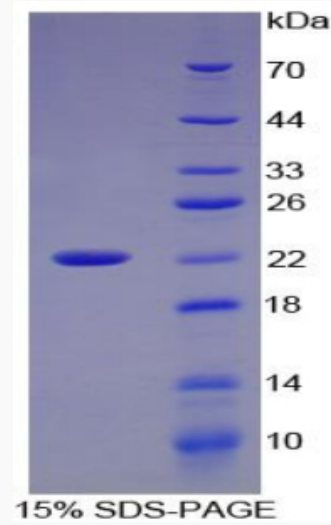
Gene Name	MMP9 matrix metalloproteinase 9 [<i>Bos taurus</i> (cattle)]
Official Symbol	MMP9
Synonyms	92 kDa gelatinase; 92 kDa type IV collagenase; GELB; MMP-9; gelatinase B; matrix metalloproteinase 9 (gelatinase B, 92kDa gelatinase, 92kDa type IV collagenase); matrix metalloproteinase 9 (gelatinase B, 92kDa matrix metalloproteinase 9 (gelatinase B, 92kDa gelatinase, 92kDa type IV collagenase); matrix metalloproteinase-9
Gene ID	282871
mRNA Refseq	NM_174744.2
Protein Refseq	NP_777169.1
UniProt ID	P52176

 Tel: 1-631-559-9269 1-516-512-3133

 Email: info@creative-biomart.com  Fax: 1-631-938-8127

 45-1 Ramsey Road, Shirley, NY 11967, USA

SDS-PAGE



 Tel: 1-631-559-9269 1-516-512-3133

 Email: info@creative-biomart.com  Fax: 1-631-938-8127

 45-1 Ramsey Road, Shirley, NY 11967, USA