

Recombinant Human MMP9 Protein (Met1-Asp707), C-His tagged

Cat. No. MMP9-4567H Lot. No. (See product label)

SPECIFICATION

Product Overview	Recombinant human MMP9 (Met1-Asp707) fused with the C-terminal His tag was expressed in Mammalian cells.
Species	Human
Source	Mammalian Cells
ProteinLength	Met1-Asp707
Form	Lyophilized powder/frozen liquid
Molecular Mass	79.42 kDa
Purity	>90% as determined by SDS-PAGE.
Notes	For research use only.
Storage	Use a manual defrost freezer and avoid repeated freeze thaw cycles. Store at 2 to 8 centigrade for one week. Store at -20 to -80 centigrade for twelve months from the date of receipt.
Storage Buffer	Supplied as solution form in PBS or lyophilized from PBS.
Reconstitution	Reconstitute in sterile water for a stock solution.

 Tel: 1-631-559-9269 1-516-512-3133

 Email: info@creative-biomart.com  Fax: 1-631-938-8127

 45-1 Ramsey Road, Shirley, NY 11967, USA

Shipping They are shipped out with dry ice/blue ice unless customers require otherwise.

GENE INFORMATION

Gene Name MMP9 matrix metalloproteinase 9 (gelatinase B, 92kDa gelatinase, 92kDa type IV collagenase) [Homo sapiens (human)]

Official Symbol MMP9

Synonyms MMP9; matrix metalloproteinase 9 (gelatinase B, 92kDa gelatinase, 92kDa type IV collagenase); CLG4B, matrix metalloproteinase 9 (gelatinase B, 92kD gelatinase, 92kD type IV collagenase), matrix metalloproteinase 9 (gelatinase B, 92kDa gelatinase, 92kDa type IV collagenase); matrix metalloproteinase-9; 92 kDa gelatinase; type V collagenase; macrophage gelatinase; 92 kDa type IV collagenase; matrix metalloproteinase 9 (gelatinase B, 92kDa gelatinase, 92kDa type IV collagenase); GELB; CLG4B; MMP-9; MANDP2;

Gene ID 4318

mRNA Refseq NM_004994

Protein Refseq NP_004985

MIM 120361

UniProt ID P14780

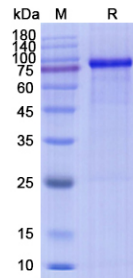
 Tel: 1-631-559-9269 1-516-512-3133

 Email: info@creative-biomart.com  Fax: 1-631-938-8127

 45-1 Ramsey Road, Shirley, NY 11967, USA



SDS-PAGE



Tel: 1-631-559-9269 1-516-512-3133

Email: info@creative-biomart.com Fax: 1-631-938-8127

45-1 Ramsey Road, Shirley, NY 11967, USA