

## Recombinant Human MMRN2 Protein, His-tagged

Cat. No. MMRN2-2452H Lot. No. (See product label)

### SPECIFICATION

<b>Product Overview</b>	Recombinant Human MMRN2 Protein (Gln23-Val188) with a N-His tag was expressed in E. coli.
<b>Species</b>	Human
<b>Source</b>	E.coli
<b>ProteinLength</b>	Gln23-Val188
<b>Description</b>	This gene encodes a protein belonging to the member of elastin microfibril interface-located (EMILIN) protein family. This family member is an extracellular matrix glycoprotein that can interfere with tumor angiogenesis and growth. It serves as a transforming growth factor beta antagonist and can interfere with the VEGF-A/VEGFR2 pathway. A related pseudogene has been identified on chromosome 6.
<b>Form</b>	Freeze-dried powder
<b>Molecular Mass</b>	Predicted Molecular Mass: 22.0 kDa Accurate Molecular Mass: 28 kDa
<b>Endotoxin</b>	<1.0 EU per 1g (determined by the LAL method).
<b>Purity</b>	> 95%
<b>Applications</b>	Positive Control; Immunogen; SDS-PAGE; WB.

 Tel: 1-631-559-9269 1-516-512-3133

 Email: [info@creative-biomart.com](mailto:info@creative-biomart.com)  Fax: 1-631-938-8127

 45-1 Ramsey Road, Shirley, NY 11967, USA

<b>Stability</b>	The thermal stability is described by the loss rate. The loss rate was determined by accelerated thermal degradation test, that is, incubate the protein at 37 centigrade for 48h, and no obvious degradation and precipitation were observed. The loss rate is less than 5% within the expiration date under appropriate storage condition.
<b>Storage</b>	Avoid repeated freeze/thaw cycles. Store at 2-8 centigrade for one month. Aliquot and store at -80 centigrade for 12 months.
<b>Storage Buffer</b>	20mM Tris, 150mM NaCl, pH8.0, containing 1mM EDTA, 1mM DTT, 0.01% SKL, 5% Trehalose and Proclin300.
<b>Reconstitution</b>	Reconstitute in 20mM Tris, 150mM NaCl (pH8.0) to a concentration of 0.1-1.0 mg/mL. Do not vortex.

## GENE INFORMATION

<b>Gene Name</b>	<a href="#">MMRN2 multimerin 2 [ Homo sapiens (human) ]</a>
<b>Official Symbol</b>	<a href="#">MMRN2</a>
<b>Synonyms</b>	MMRN2; multimerin 2; EMILIN3; EMILIN-3; ENDOGLYX-1; multimerin-2 EMILIN-like protein EndoGlyx-1 elastin microfibril interface located protein 3 elastin microfibril interfacier 3 endoGlyx-1 p125/p140 subunit
<b>Gene ID</b>	<a href="#">79812</a>
<b>mRNA Refseq</b>	<a href="#">NM_024756</a>
<b>Protein Refseq</b>	<a href="#">NP_079032</a>

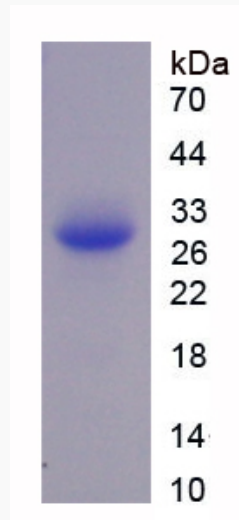
 Tel: 1-631-559-9269 1-516-512-3133

 Email: [info@creative-biomart.com](mailto:info@creative-biomart.com)  Fax: 1-631-938-8127

 45-1 Ramsey Road, Shirley, NY 11967, USA

MIM 608925

UniProt ID Q9H8L6



 Tel: 1-631-559-9269 1-516-512-3133

 Email: [info@creative-biomart.com](mailto:info@creative-biomart.com)  Fax: 1-631-938-8127

 45-1 Ramsey Road, Shirley, NY 11967, USA