

Recombinant Human MMRN2 Protein, GST-tagged

Cat. No. MMRN2-5440H Lot. No. (See product label)

SPECIFICATION

Product Overview	Human MMRN2 full-length ORF (AAH94744.1, 1 a.a. - 949 a.a.) recombinant protein with GST-tag at N-terminal.
Species	Human
Source	Wheat Germ
Description	This gene encodes a protein belonging to the member of elastin microfibril interface-located (EMILIN) protein family. This family member is an extracellular matrix glycoprotein that can interfere with tumor angiogenesis and growth. It serves as a transforming growth factor beta antagonist and can interfere with the VEGF-A/VEGFR2 pathway. A related pseudogene has been identified on chromosome 6. [provided by RefSeq, Aug 2012]
Molecular Mass	130.8 kDa
AA Sequence	MILSLLFSLGGPLGWGLLGAWAQASSTLSLDLQSSRTPGVWKAEEEDTGKDPVGR NWCPYPMSKLVTLALCKTEKFLIHSQQPCPQGAPDCQKVKVMYRMAHKPVYQVK QKVLTSLAWRCCPGYTGPNCEHHDSMAIPEPADPGDSHQEPQDGPVSFKPGHLAA VINEVEVQQEQQEHLGLQNDVHRVADSLPGLWKALPGNLTAAVMEANQTGHEF PDRSLEQVLLPHVDTFLQVHFSPiWRSFNQSLHSLTQAIRNLSLDVEANRQAISRQV DSAVARADFQELGAKFEAKVQENTQRVGQLRQDVEDRLHAQHFTLHRSISELQADV DTKLKRHLKAQEAPGTNGSLVLATPGAGARPEPDSLQARLGQLQRNLSLHMTTAR REEELQYTLEDMRATLTRHVDEIKELYSEDETDFDQISKVERQVEELQVNHTALREL

Tel: 1-631-559-9269 1-516-512-3133

Email: info@creative-biomart.com Fax: 1-631-938-8127

45-1 Ramsey Road, Shirley, NY 11967, USA

RVILMEKSLIMEENKEEVERQLLELNLTLQHLQGGHADLIKYVKDCNCQKLYLDDVI
 REGQRDATRALEETQVSLDERRQLDGSLLQALQNAVDAVSLAVDAHKAEGERARA
 ATSRRLRSQVQALDDEVGALKAAAAEARHEVRQLHSAFAALLEDALRHEAVLAALFGE
 EVLEEMSEQTPGPLPLSYEQIRVALQDAASGLQEALGWDELAARVTALEQASEPP
 RPAEHLEPSHDAGREEAATTALAGLARELQSLSDVKNVGRCCAEAGAGAASLNA
 SLDGLHNALFATQRSLEQHQLRFHSLFGNFQGLMEANVSLDLGKLQTMLSRKGKKQ
 QKDLEAPRKRDKKEAEPLVDIRVTGPVPGALGAALWEAGSPVAFYASFSEGTAALQ
 TVKFNTTYINIGSSYFPEHGYFRAPERGVYLFVAVSVEFGPGPGTGQLVFGGHHRTPV
 CTTGQGSSTATVFAMAELQKGERVWFELTQGSITKRSLSGTAFGGFLMFKT

Applications

- Enzyme-linked Immunoabsorbent Assay
- Western Blot (Recombinant protein)
- Antibody Production
- Protein Array

Notes Best use within three months from the date of receipt of this protein.

Storage Store at -80 centigrade. Aliquot to avoid repeated freezing and thawing.

Storage Buffer 50 mM Tris-HCl, 10 mM reduced Glutathione, pH=8.0 in the elution buffer.

GENE INFORMATION

Gene Name [MMRN2 multimerin 2 \[Homo sapiens \(human\) \]](#)

Official Symbol [MMRN2](#)

Synonyms MMRN2; multimerin 2; EMILIN3; EMILIN-3; ENDOGLYX-1; multimerin-2; EMILIN-like protein EndoGlyx-1; elastin microfibril interface located protein 3; elastin microfibril interfacier 3; endoGlyx-1 p125/p140 subunit

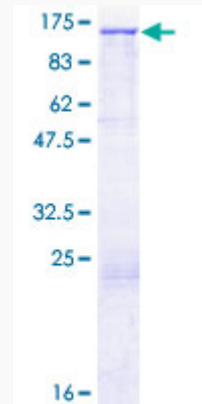
 Tel: 1-631-559-9269 1-516-512-3133

 Email: info@creative-biomart.com  Fax: 1-631-938-8127

 45-1 Ramsey Road, Shirley, NY 11967, USA

Gene ID	79812
mRNA Refseq	NM_024756
Protein Refseq	NP_079032
MIM	608925
UniProt ID	Q9H8L6

**Quality Control
Testing:**



12.5% SDS-PAGE Stained with Coomassie Blue.

 Tel: 1-631-559-9269 1-516-512-3133

 Email: info@creative-biomart.com  Fax: 1-631-938-8127

 45-1 Ramsey Road, Shirley, NY 11967, USA