

Recombinant Human MMS19 Protein, GST-tagged

Cat. No. MMS19-5441H Lot. No. (See product label)

SPECIFICATION

Product Overview	Human MMS19L full-length ORF (AAH07298, 1 a.a. - 293 a.a.) recombinant protein with GST-tag at N-terminal.
Species	Human
Source	Wheat Germ
Description	MMS19 (MMS19 Homolog, Cytosolic Iron-Sulfur Assembly Component) is a Protein Coding gene. Among its related pathways are Cytosolic iron-sulfur cluster assembly and Metabolism. GO annotations related to this gene include binding and protein binding, bridging.
Molecular Mass	57.97 kDa
AA Sequence	MRELLELSCCHSCPFSSTAAAKCFAGLLNKHPAGQQLDEFLQLAVDKVEAGLGSGP CRSQAFTLLLWVTKALVLRYPHPLSSCLTARLMGLLSDPELGPAAADGFLLMSDCTD VLTRAGHAEVRIMFRQRFFTDNVPALVQGFHAAPPDVKPNYLKGLSHVLNRLPKPVL LPELPTLLSLLLEALSCPDCVVQLSTLSCLQPLLLLEAPQVMSLHVDTLVTKFLNLSSSP SMAVRIAALQCMHALTRLPTVLLPYKPQVIRALAKSLDDKKRLVRKEAVSARGEWFL LLGSPGS
Applications	Enzyme-linked Immunoabsorbent Assay Western Blot (Recombinant protein) Antibody Production Protein Array

 Tel: 1-631-559-9269 1-516-512-3133

 Email: info@creative-biomart.com  Fax: 1-631-938-8127

 45-1 Ramsey Road, Shirley, NY 11967, USA

Notes	Best use within three months from the date of receipt of this protein.
Storage	Store at -80 centigrade. Aliquot to avoid repeated freezing and thawing.
Storage Buffer	50 mM Tris-HCl, 10 mM reduced Glutathione, pH=8.0 in the elution buffer.
GENE INFORMATION	
Gene Name	MMS19 MMS19 nucleotide excision repair homolog (<i>S. cerevisiae</i>) [<i>Homo sapiens</i>]
Official Symbol	MMS19
Synonyms	MMS19; MMS19 nucleotide excision repair homolog (<i>S. cerevisiae</i>); MMS19L; MMS19 nucleotide excision repair protein homolog; hMMS19; MET18; MET18 homolog (<i>S. cerevisiae</i>); MET18 homolog; MMS19-like protein; homolog of yeast MMS19; MMS19-like (MET18 homolog, <i>S. cerevisiae</i>); FLJ34167; FLJ95146; MGC99604;
Gene ID	64210
mRNA Refseq	NM_022362
Protein Refseq	NP_071757
UniProt ID	Q96T76

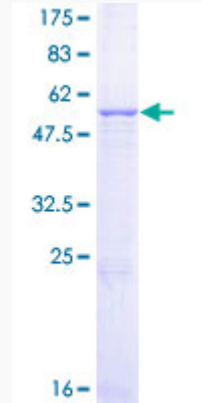
 Tel: 1-631-559-9269 1-516-512-3133

 Email: info@creative-biomart.com  Fax: 1-631-938-8127

 45-1 Ramsey Road, Shirley, NY 11967, USA

Quality Control

Testing:



12.5% SDS-PAGE Stained with Coomassie Blue.

 Tel: 1-631-559-9269 1-516-512-3133

 Email: info@creative-biomart.com  Fax: 1-631-938-8127

 45-1 Ramsey Road, Shirley, NY 11967, USA