

Recombinant Human MNAT1 Protein, GST-tagged

Cat. No. MNAT1-5444H Lot. No. (See product label)

SPECIFICATION

Product Overview	Human MNAT1 full-length ORF (NP_002422.1, 1 a.a. - 309 a.a.) recombinant protein with GST-tag at N-terminal.
Species	Human
Source	Wheat Germ
Description	Cyclin-dependent kinases (CDKs), which play an essential role in cell cycle control of eukaryotic cells, are phosphorylated and thus activated by the CDK-activating kinase (CAK). CAK is a multisubunit protein that includes CDK7 (MIM 601955), cyclin H (CCNH; MIM 601953), and MAT1. MAT1 (for menage a trois-1) is involved in the assembly of the CAK complex.[supplied by OMIM
Molecular Mass	62.2 kDa
AA Sequence	MDDQGCPKCKTTKYRNPSLKLMVNVCGHTLCESCVDLLFVRGAGNCPECGTPLRK SNFRVQLFEDPTVDKEVEIRKKVLKIYNKREEDFPSLREYNDFFLEEVEEIVFNLTNNV DLDNKTKKMEIYQKENKDVIQKNKLTREQEELEEALVEVERQENEQRRLFIQKEEQ LQQILKRKNKQAFLEESSDLPVALLLAQHKDRSTQLEMQLKPKPKVPVTFSTGIK MGQHISLAPIHKLEEALYEQPLQIETYGPHVPELEMLGRLGYLNHVRAASPQDLAG GYTSSLACHRALQDAFSGLFWQPS
Applications	Enzyme-linked Immunoabsorbent Assay Western Blot (Recombinant protein) Antibody Production

 Tel: 1-631-559-9269 1-516-512-3133

 Email: info@creative-biomart.com  Fax: 1-631-938-8127

 45-1 Ramsey Road, Shirley, NY 11967, USA

Protein Array

Notes	Best use within three months from the date of receipt of this protein.
Storage	Store at -80 centigrade. Aliquot to avoid repeated freezing and thawing.
Storage Buffer	50 mM Tris-HCl, 10 mM reduced Glutathione, pH=8.0 in the elution buffer.

GENE INFORMATION

Gene Name	MNAT1 menage a trois homolog 1, cyclin H assembly factor (<i>Xenopus laevis</i>) [<i>Homo sapiens</i>]
Official Symbol	MNAT1
Synonyms	MAT1; TFB3; CAP35; RNF66
Gene ID	4331
mRNA Refseq	NM_002431
Protein Refseq	NP_002422
MIM	602659
UniProt ID	P51948

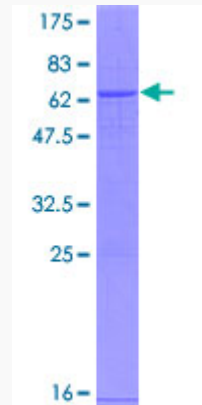
 Tel: 1-631-559-9269 1-516-512-3133

 Email: info@creative-biomart.com  Fax: 1-631-938-8127

 45-1 Ramsey Road, Shirley, NY 11967, USA

Quality Control

Testing:



12.5% SDS-PAGE Stained with Coomassie Blue.

 Tel: 1-631-559-9269 1-516-512-3133

 Email: info@creative-biomart.com  Fax: 1-631-938-8127

 45-1 Ramsey Road, Shirley, NY 11967, USA