

Recombinant Human MND1 Protein, GST-tagged

Cat. No. MND1-4669H Lot. No. (See product label)

SPECIFICATION

Product Overview	Human GAJ full-length ORF (AAH32142, 1 a.a. - 205 a.a.) recombinant protein with GST-tag at N-terminal.
Species	Human
Source	Wheat Germ
Description	The product of the MND1 gene associates with HOP2 (MIM 608665) to form a stable heterodimeric complex that binds DNA and stimulates the recombinase activity of RAD51 (MIM 179617) and DMC1 (MIM 602721) (Chi et al., 2007 [PubMed 17639080]). Both the MND1 and HOP2 genes are indispensable for meiotic recombination.[supplied by OMIM
Molecular Mass	48.29 kDa
AA Sequence	MSKKKGLSAEEKRTRMMEIFSETKDVFQLKDLEKIAPKEKGITAMSVKEVLQSLVDD GMVDCERIGTSNYYWAFPSKALHARKHKLEVLESQQLSEGSQKHASLQKSIEKAKIGR CETEERTRLAKELSSLRDQREQLKAEVEKYKDCDPQVVEEIRQANKVAKEAANRWT DNIFAIKSWAKRKFGFEENKIDRTFGIPEDFDYID
Applications	Enzyme-linked Immunoabsorbent Assay Western Blot (Recombinant protein) Antibody Production Protein Array

 Tel: 1-631-559-9269 1-516-512-3133

 Email: info@creative-biomart.com  Fax: 1-631-938-8127

 45-1 Ramsey Road, Shirley, NY 11967, USA

Notes	Best use within three months from the date of receipt of this protein.
Storage	Store at -80 centigrade. Aliquot to avoid repeated freezing and thawing.
Storage Buffer	50 mM Tris-HCl, 10 mM reduced Glutathione, pH=8.0 in the elution buffer.

GENE INFORMATION

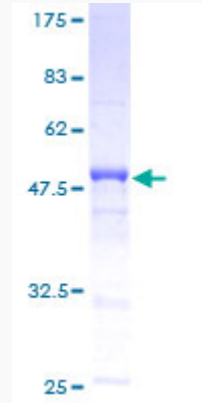
Gene Name	MND1 meiotic nuclear divisions 1 homolog (<i>S. cerevisiae</i>) [<i>Homo sapiens</i>]
Official Symbol	MND1
Synonyms	MND1; meiotic nuclear divisions 1 homolog (<i>S. cerevisiae</i>); meiotic nuclear division protein 1 homolog; GAJ; homolog of yeast MND1;
Gene ID	84057
mRNA Refseq	NM_001253861
Protein Refseq	NP_001240790
MIM	611422
UniProt ID	Q9BWT6

 Tel: 1-631-559-9269 1-516-512-3133

 Email: info@creative-biomart.com  Fax: 1-631-938-8127

 45-1 Ramsey Road, Shirley, NY 11967, USA

**Quality Control
Testing**



12.5% SDS-PAGE Stained with Coomassie Blue.

 Tel: 1-631-559-9269 1-516-512-3133

 Email: info@creative-biomart.com  Fax: 1-631-938-8127

 45-1 Ramsey Road, Shirley, NY 11967, USA