

Recombinant Human MOAP1 Protein, Myc/DDK-tagged, C13 and N15-labeled

Cat. No. MOAP1-3638H Lot. No. (See product label)

SPECIFICATION

Product Overview	MOAP1 MS Standard C13 and N15-labeled recombinant protein (NP_071434) with a C-terminal MYC/DDK tag, was expressed in HEK293 cells.
Species	Human
Source	HEK293
Description	The protein encoded by this gene was identified by its interaction with apoptosis regulator BAX protein. This protein contains a Bcl-2 homology 3 (BH3)-like motif, which is required for the association with BAX. When overexpressed, this gene has been shown to mediate caspase-dependent apoptosis.
Molecular Mass	39.5 kDa
AA Sequence	<p> MTLRLLDWCRCGMDMNPRKALLIAGISQSCSVAEIEEALQAGLAPLGEYRLLGRMFR RDENRKVALVGLTAETSHALVPKEIPGKGGIWRVIFKPPDPDNTFLSRLNEFLAGEG MTVGELSRALGHENGLDPEQGMIPEMWAPMLAQALEALQPALQCLKYKKLRVFS GRESPEPGEIEFGRWMFHHTTQMIKAWQVPDVEKRRRLLLESLRGPALDVIRVLKINN PLITVDECLQALEEVFGVTDNPRELQVKYLTQKDEEKLSAYVLRLEPLLQKLVQRG AIERDAVNQARLDQVIAGAVHKTIRRELNLPEDGPAPGFLQLLVLIKDYEAEEEEALL QAILEGNFTTRTRPLEQKLISEEDLAANDILDYKDDDDKV </p>
Purity	> 80% as determined by SDS-PAGE and Coomassie blue staining

 Tel: 1-631-559-9269 1-516-512-3133

 Email: info@creative-biomart.com  Fax: 1-631-938-8127

 45-1 Ramsey Road, Shirley, NY 11967, USA



Stability	Stable for 3 months from receipt of products under proper storage and handling conditions.
Storage	Store at -80 centigrade. Avoid repeated freeze-thaw cycles.
Concentration	50 µg/mL as determined by BCA
Storage Buffer	100 mM glycine, 25 mM Tris-HCl, pH 7.3.

GENE INFORMATION

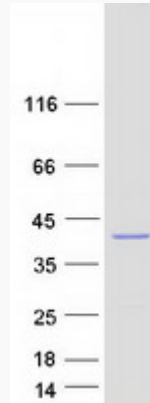
Gene Name	MOAP1 modulator of apoptosis 1 [Homo sapiens (human)]
Official Symbol	MOAP1
Synonyms	MOAP1; modulator of apoptosis 1; MAP 1; paraneoplastic Ma antigen family member 4; PNMA4; MAP1; paraneoplastic antigen Ma4; paraneoplastic antigen like 4; MAP-1;
Gene ID	64112
mRNA Refseq	NM_022151
Protein Refseq	NP_071434
MIM	609485
UniProt ID	Q96BY2

Tel: 1-631-559-9269 1-516-512-3133

Email: info@creative-biomart.com Fax: 1-631-938-8127

45-1 Ramsey Road, Shirley, NY 11967, USA

SDS-PAGE



 Tel: 1-631-559-9269 1-516-512-3133

 Email: info@creative-biomart.com  Fax: 1-631-938-8127

 45-1 Ramsey Road, Shirley, NY 11967, USA