

## Recombinant Human MOB1A Protein, GST-tagged

Cat. No. MOB1A-5455H Lot. No. (See product label)

### SPECIFICATION

<b>Product Overview</b>	Human MOBKL1B full-length ORF ( AAH03398.1, 1 a.a. - 216 a.a.) recombinant protein with GST-tag at N-terminal.
<b>Species</b>	Human
<b>Source</b>	Wheat Germ
<b>Description</b>	The protein encoded by this gene is a component of the Hippo signaling pathway, which controls organ size and tumor growth by enhancing apoptosis. Loss of the encoded protein results in cell proliferation and cancer formation. The encoded protein is also involved in the control of microtubule stability during cytokinesis. Several transcript variants encoding different isoforms have been found for this gene. [provided by RefSeq, Nov 2015]
<b>Molecular Mass</b>	51.5 kDa
<b>AA Sequence</b>	MSFLFSSRSSKTFKPKKNIPESHQYELLKHAEATLGSGNLRQAVMLPEGEDLNEWI AVNTVDFFNQINMLYGTITEFCTEASCPVMSAGPRYEYHWADGTNIKKPIKCSAPKYI DYLMTWVQDQLDDETLFPSKIGVFPKFNMSVAKTILKRLFRVYAHYHQHFDSVMQ LQEEAHLNTSFKHFIFFVQEFNLIDRRELAPLQELIEKLGSKDR
<b>Applications</b>	Enzyme-linked Immunoabsorbent Assay Western Blot (Recombinant protein) Antibody Production Protein Array

 Tel: 1-631-559-9269 1-516-512-3133

 Email: [info@creative-biomart.com](mailto:info@creative-biomart.com)  Fax: 1-631-938-8127

 45-1 Ramsey Road, Shirley, NY 11967, USA

<b>Notes</b>	Best use within three months from the date of receipt of this protein.
<b>Storage</b>	Store at -80 centigrade. Aliquot to avoid repeated freezing and thawing.
<b>Storage Buffer</b>	50 mM Tris-HCl, 10 mM reduced Glutathione, pH=8.0 in the elution buffer.
<b>GENE INFORMATION</b>	
<b>Gene Name</b>	MOB1A MOB kinase activator 1A [ Homo sapiens (human) ]
<b>Official Symbol</b>	MOB1A
<b>Synonyms</b>	MOB1A; MOB kinase activator 1A; MOB1; MATS1; Mob4B; C2orf6; MOBK1B; MOBKL1B; MOB kinase activator 1A; MOB1 Mps One Binder homolog A; MOB1, Mps One Binder kinase activator-like 1B; mob1 alpha; mob1 homolog 1B; mps one binder kinase activator-like 1B
<b>Gene ID</b>	55233
<b>mRNA Refseq</b>	NM_001317110
<b>Protein Refseq</b>	NP_001304039
<b>MIM</b>	609281
<b>UniProt ID</b>	Q9H8S9

 Tel: 1-631-559-9269 1-516-512-3133

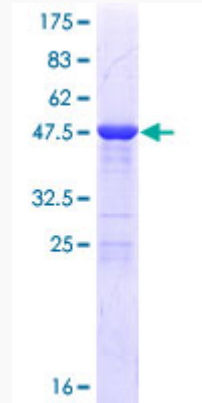
 Email: [info@creative-biomart.com](mailto:info@creative-biomart.com)  Fax: 1-631-938-8127

 45-1 Ramsey Road, Shirley, NY 11967, USA



**Quality Control**

**Testing:**



12.5% SDS-PAGE Stained with Coomassie Blue.

Tel: 1-631-559-9269 1-516-512-3133

Email: [info@creative-biomart.com](mailto:info@creative-biomart.com) Fax: 1-631-938-8127

45-1 Ramsey Road, Shirley, NY 11967, USA