

Recombinant Human MOB1A Protein, Myc/DDK-tagged, C13 and N15-labeled

Cat. No. MOB1A-5869H Lot. No. (See product label)

SPECIFICATION

Product Overview	MOBK1B MS Standard C13 and N15-labeled recombinant protein (NP_060691) with a C-terminal MYC/DDK tag, was expressed in HEK293 cells.
Species	Human
Source	HEK293
Description	The protein encoded by this gene is a component of the Hippo signaling pathway, which controls organ size and tumor growth by enhancing apoptosis. Loss of the encoded protein results in cell proliferation and cancer formation. The encoded protein is also involved in the control of microtubule stability during cytokinesis. Several transcript variants encoding different isoforms have been found for this gene.
Molecular Mass	24.9 kDa
AA Sequence	MSFLFSSRSSKTFKPKKNIPESHQYELLKHAEATLGSGNLRQAVMLPEGEDLNEWI AVNTVDFFNQINMLYGTITEFCTEASCPVMSAGPRYEYHWADGTNIKKPIKCSAPKYI DYLMTWVQDQLDDETLFPSKIGVFPKFNMSVAKTILKRLFRVYAHYHQHFDSVMQ LQEEAHLNTSFKHFIFFVQEFNLIDRRELAPLQELIEKLGSKDRTRTRPLEQKLISEED LAANDILDYKDDDDKV
Purity	> 80% as determined by SDS-PAGE and Coomassie blue staining
Stability	Stable for 3 months from receipt of products under proper storage and handling

 Tel: 1-631-559-9269 1-516-512-3133

 Email: info@creative-biomart.com  Fax: 1-631-938-8127

 45-1 Ramsey Road, Shirley, NY 11967, USA

conditions.

Storage Store at -80 centigrade. Avoid repeated freeze-thaw cycles.

Concentration 50 µg/mL as determined by BCA

Storage Buffer 100 mM glycine, 25 mM Tris-HCl, pH 7.3.

GENE INFORMATION

Gene Name MOB1A MOB kinase activator 1A [Homo sapiens (human)]

Official Symbol MOB1A

Synonyms

MOB1A; MOB kinase activator 1A; C2orf6, chromosome 2 open reading frame 6, MOB1 Mps One Binder homolog A (yeast), MOB1, Mps One Binder kinase activator like 1B (yeast), MOBK1B, MOBKL1B; FLJ10788; FLJ11595; Mats1; MOB1; Mob4B; mob1 alpha; mob1 homolog 1B; MOB1 Mps One Binder homolog A; mps one binder kinase activator-like 1B; MOB1, Mps One Binder kinase activator-like 1B; MATS1; C2orf6; MOBK1B; MOBKL1B;

Gene ID 55233

mRNA Refseq NM_018221

Protein Refseq NP_060691

MIM 609281

UniProt ID Q9H8S9

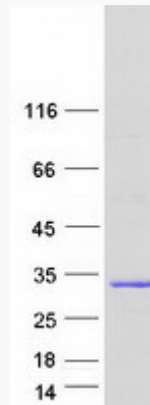
 Tel: 1-631-559-9269 1-516-512-3133

 Email: info@creative-biomart.com  Fax: 1-631-938-8127

 45-1 Ramsey Road, Shirley, NY 11967, USA



SDS-PAGE



Tel: 1-631-559-9269 1-516-512-3133

Email: info@creative-biomart.com Fax: 1-631-938-8127

45-1 Ramsey Road, Shirley, NY 11967, USA