

Recombinant Human MOB2 Protein, GST-tagged

Cat. No. MOB2-4614H Lot. No. (See product label)

SPECIFICATION

Product Overview	Human HCCA2 full-length ORF (NP_443731.2, 1 a.a. - 237 a.a.) recombinant protein with GST-tag at N-terminal.
Species	Human
Source	Wheat Germ
Description	MOB2 (MOB Kinase Activator 2) is a Protein Coding gene. An important paralog of this gene is MOB1A.
Molecular Mass	53.3 kDa
AA Sequence	MDWLMGKSKAKPNGKKPAAEERKAYLEPEHTKARITDFQFKELVVLPREIDLNEWL ASNTTTFHHINLQYSTISEFCTGETCQTMVAVCNTQYYWYDERGKKVKCTAPQYVD FVMSSVQKLVTDDEDVFPTKYGREFPSSFESLVRKICRHLFHVLAHIYWAHFKETLALE LHGHLNTLYVHFILFAREFNLLDPKETAIMDDLTEVLCGAGGVHSGGSGDGAGSG GPGAQNHVKER
Applications	Enzyme-linked Immunoabsorbent Assay Western Blot (Recombinant protein) Antibody Production Protein Array
Notes	Best use within three months from the date of receipt of this protein.

 Tel: 1-631-559-9269 1-516-512-3133

 Email: info@creative-biomart.com  Fax: 1-631-938-8127

 45-1 Ramsey Road, Shirley, NY 11967, USA

Storage Store at -8 centigrade. Aliquot to avoid repeated freezing and thawing.

Storage Buffer 50 mM Tris-HCl, 10 mM reduced Glutathione, pH=8.0 in the elution buffer.

GENE INFORMATION

Gene Name MOB2 MOB kinase activator 2 [Homo sapiens (human)]

Official Symbol MOB2

Synonyms MOB2; MOB kinase activator 2; HCCA2; MOB kinase activator 2; MOB2 Mps One Binder homolog; Mps one binder kinase activator-like 2

Gene ID 81532

mRNA Refseq NM_001172223

Protein Refseq NP_001165694

MIM 611969

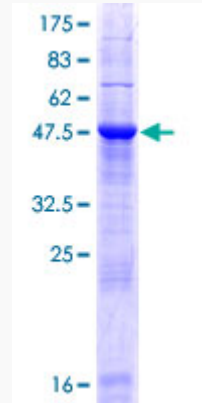
UniProt ID Q70IA6

 Tel: 1-631-559-9269 1-516-512-3133

 Email: info@creative-biomart.com  Fax: 1-631-938-8127

 45-1 Ramsey Road, Shirley, NY 11967, USA

**Quality Control
Testing**



12.5% SDS-PAGE Stained with Coomassie Blue.

 Tel: 1-631-559-9269 1-516-512-3133

 Email: info@creative-biomart.com  Fax: 1-631-938-8127

 45-1 Ramsey Road, Shirley, NY 11967, USA