

## Recombinant Human MOB3A Protein, GST-tagged

Cat. No. MOB3A-5456H Lot. No. (See product label)

### SPECIFICATION

|                         |   |
|-------------------------|---|
| <b>Product Overview</b> | Human MOBKL2A full-length ORF ( NP_570719.1, 1 a.a. - 217 a.a.) recombinant protein with GST-tag at N-terminal.   |
| <b>Species</b>          | Human   |
| <b>Source</b>           | Wheat Germ  |
| <b>Description</b>      | MOB3A (MOB Kinase Activator 3A) is a Protein Coding gene. An important paralog of this gene is MOB3B.   |
| <b>Molecular Mass</b>   | 51.9 kDa  |
| <b>AA Sequence</b>      | MSNPFLKQVFNKDKTFRPKRKFEPGTQRFELHKKQAQASLNAGLDLRLAVQLPPGED<br>LNDWVAVHVVDFFNRVNLIYGTISDGCTEQSCPVMSSGGPKYEYRWQDEHKFRKPT<br>ALSAPRYMDLLMDWIEAQINNEDLFPTNVGTPFPKNFLQTVRKILSRLFRVHVHVIH<br>HFDRIAQMGSEAHVNTCYKHFYFVKEFGLIDTKELEPLKEMTARMCH |
| <b>Applications</b>     | Enzyme-linked Immunoabsorbent Assay<br>Western Blot (Recombinant protein)<br>Antibody Production<br>Protein Array   |
| <b>Notes</b>            | Best use within three months from the date of receipt of this protein.  |
| <b>Storage</b>          | Store at -80 centigrade. Aliquot to avoid repeated freezing and thawing.  |

 Tel: 1-631-559-9269 1-516-512-3133

 Email: [info@creative-biomart.com](mailto:info@creative-biomart.com)  Fax: 1-631-938-8127

 45-1 Ramsey Road, Shirley, NY 11967, USA

**Storage Buffer** 50 mM Tris-HCl, 10 mM reduced Glutathione, pH=8.0 in the elution buffer.

## GENE INFORMATION

**Gene Name** MOB3A MOB kinase activator 3A [ Homo sapiens (human) ]

**Official Symbol** MOB3A

**Synonyms** MOB3A; MOB kinase activator 3A; MOB1C; moblak; MOB-LAK; MOBKL2A; MOB kinase activator 3A; MOB LAK; MOB1, Mps One Binder kinase activator-like 2A; mob1 homolog 2A; mps one binder kinase activator-like 2A

**Gene ID** 126308

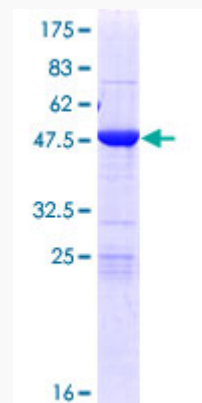
**mRNA Refseq** NM\_130807

**Protein Refseq** NP\_570719

**UniProt ID** Q96BX8

**Quality Control**

**Testing:**



12.5% SDS-PAGE Stained with Coomassie Blue.

 Tel: 1-631-559-9269 1-516-512-3133

 Email: [info@creative-biomart.com](mailto:info@creative-biomart.com)  Fax: 1-631-938-8127

 45-1 Ramsey Road, Shirley, NY 11967, USA