

# Recombinant Human MOB4 Protein, Myc/DDK-tagged, C13 and N15-labeled

**Cat. No.** MOB4-6342H    **Lot. No.** (See product label)

## SPECIFICATION

<b>Product Overview</b>	MOBKL3 MS Standard C13 and N15-labeled recombinant protein (NP_056202) with a C-terminal MYC/DDK tag, was expressed in HEK293 cells.
<b>Species</b>	Human
<b>Source</b>	HEK293
<b>Description</b>	This gene was identified based on its similarity with the mouse counterpart. Studies of the mouse counterpart suggest that the expression of this gene may be regulated during oocyte maturation and preimplantation following zygotic gene activation. Alternatively spliced transcript variants encoding distinct isoforms have been observed. Naturally occurring read-through transcription occurs between this locus and the neighboring locus HSPE1.
<b>Molecular Mass</b>	25.9 kDa
<b>AA Sequence</b>	MVMAEGTAVLRRNRPGTKAQDFYNWPDESFDMDSTLAVQQYIQQNIRADCSNID KILEPPEGQDEGVWKYEHLRQFCLELNGLAVKLQSECHPDTCTQMTATEQWIFLCA AHKTPKECPAIDYTRHTLDGAACLLNSNKYFPSRVSİKESSVAKLGSVCRRIRIFSH AYFHHRQIFDEYENETFLCHRFTKFVMKYNLMSKDNLIVPILEEEVQNSVSGESEATR TRPLEQKLISEEDLAANDILDYKDDDDKV
<b>Purity</b>	> 80% as determined by SDS-PAGE and Coomassie blue staining

 Tel: 1-631-559-9269    1-516-512-3133

 Email: [info@creative-biomart.com](mailto:info@creative-biomart.com)     Fax: 1-631-938-8127

 45-1 Ramsey Road, Shirley, NY 11967, USA

<b>Stability</b>	Stable for 3 months from receipt of products under proper storage and handling conditions.
<b>Storage</b>	Store at -80 centigrade. Avoid repeated freeze-thaw cycles.
<b>Concentration</b>	50 µg/mL as determined by BCA
<b>Storage Buffer</b>	100 mM glycine, 25 mM Tris-HCl, pH 7.3.

## GENE INFORMATION

<b>Gene Name</b>	MOB4 MOB family member 4, phocein [ Homo sapiens (human) ]
<b>Official Symbol</b>	MOB4
<b>Synonyms</b>	2C4D; MOB1; MOB3; PHOCN; PREI3; CGI-95; MOBKL3; MOB4; MOB family member 4, phocein
<b>Gene ID</b>	25843
<b>mRNA Refseq</b>	NM_015387
<b>Protein Refseq</b>	NP_056202
<b>MIM</b>	609361
<b>UniProt ID</b>	Q9Y3A3

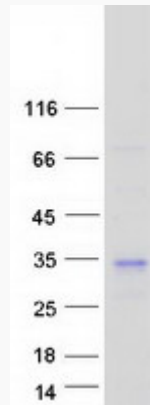
 Tel: 1-631-559-9269 1-516-512-3133

 Email: [info@creative-biomart.com](mailto:info@creative-biomart.com)  Fax: 1-631-938-8127

 45-1 Ramsey Road, Shirley, NY 11967, USA



**SDS-PAGE**



Tel: 1-631-559-9269 1-516-512-3133

Email: [info@creative-biomart.com](mailto:info@creative-biomart.com) Fax: 1-631-938-8127

45-1 Ramsey Road, Shirley, NY 11967, USA