

Recombinant Human MOBKL1A Protein, GST-tagged

Cat. No. MOBKL1A-5453H Lot. No. (See product label)

SPECIFICATION

Product Overview	Human MOBKL1A full-length ORF (NP_775739.1, 1 a.a. - 216 a.a.) recombinant protein with GST-tag at N-terminal.
Species	Human
Source	Wheat Germ
Description	The protein encoded by this gene is similar to the yeast Mob1 protein. Yeast Mob1 binds Mps1p, a protein kinase essential for spindle pole body duplication and mitotic checkpoint regulation. [provided by RefSeq]
Molecular Mass	51.5 kDa
AA Sequence	MSFLFGSRSSKTFKPKKNIPESHQYELLKHAEATLGSGNLRMAVMLPEGEDLNEW VAVNTVDFFNQINMLYGTITDFCTEESCPVMSAGPKYEYHWADGTNIKKPIKCSAPK YIDYLMTWVQDQLDDETLFPSKIGVPPKPNFMSVAKTILKRLFRVYAHYHQHFDPVI QLQEEAHLNTSFKHFIFVQEFNLIDRRELAPLQELIEKLTSKDR
Applications	Enzyme-linked Immunoabsorbent Assay Western Blot (Recombinant protein) Antibody Production Protein Array
Notes	Best use within three months from the date of receipt of this protein.

 Tel: 1-631-559-9269 1-516-512-3133

 Email: info@creative-biomart.com  Fax: 1-631-938-8127

 45-1 Ramsey Road, Shirley, NY 11967, USA

Storage	Store at -80 centigrade. Aliquot to avoid repeated freezing and thawing.
Storage Buffer	50 mM Tris-HCl, 10 mM reduced Glutathione, pH=8.0 in the elution buffer.
GENE INFORMATION	
Gene Name	MOB1B MOB kinase activator 1B [Homo sapiens (human)]
Official Symbol	MOBKL1A
Synonyms	MOB1B; MATS2; MOB4A; MOBKL1A; MOB kinase activator 1B; mob1A; mob1 homolog 1A; MOB1 Mps One Binder homolog B; mps one binder kinase activator-like 1A; MOB1, Mps One Binder kinase activator-like 1A
Gene ID	92597
mRNA Refseq	NM_001244766
Protein Refseq	NP_001231695
MIM	609282
UniProt ID	Q7L9L4

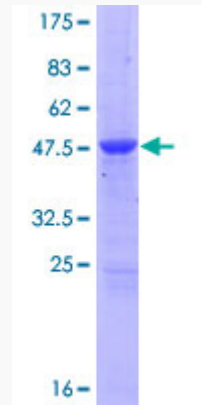
 Tel: 1-631-559-9269 1-516-512-3133

 Email: info@creative-biomart.com  Fax: 1-631-938-8127

 45-1 Ramsey Road, Shirley, NY 11967, USA

Quality Control

Testing:



12.5% SDS-PAGE Stained with Coomassie Blue.

 Tel: 1-631-559-9269 1-516-512-3133

 Email: info@creative-biomart.com  Fax: 1-631-938-8127

 45-1 Ramsey Road, Shirley, NY 11967, USA