

Recombinant Human MOCS2 Protein, GST-tagged

Cat. No. MOCS2-5464H **Lot. No.** (See product label)

SPECIFICATION

Product Overview	Human MOCS2 full-length ORF (NP_789776.1, 1 a.a. - 88 a.a.) recombinant protein with GST-tag at N-terminal.
Species	Human
Source	Wheat Germ
Description	Eukaryotic molybdoenzymes use a unique molybdenum cofactor (MoCo) consisting of a pterin, termed molybdopterin, and the catalytically active metal molybdenum. MoCo is synthesized from precursor Z by the heterodimeric enzyme molybdopterin synthase. The large and small subunits of molybdopterin synthase are both encoded from this gene by overlapping open reading frames. The proteins were initially thought to be encoded from a bicistronic transcript. They are now thought to be encoded from monocistronic transcripts. Alternatively spliced transcripts have been found for this locus that encode the large and small subunits. [provided by RefSeq]
Molecular Mass	36.2 kDa
AA Sequence	MVPLCQVEVLYFAKSAEITGVRSETISVPQEIKALQLWKEIETRHPGLADVRNQIIFAV RQEYVELGDQLLVLPQGD EIAVIPPISSG
Applications	Enzyme-linked Immunoabsorbent Assay Western Blot (Recombinant protein) Antibody Production Protein Array

 Tel: 1-631-559-9269 1-516-512-3133

 Email: info@creative-biomart.com  Fax: 1-631-938-8127

 45-1 Ramsey Road, Shirley, NY 11967, USA

Notes	Best use within three months from the date of receipt of this protein.
Storage	Store at -80 centigrade. Aliquot to avoid repeated freezing and thawing.
Storage Buffer	50 mM Tris-HCl, 10 mM reduced Glutathione, pH=8.0 in the elution buffer.
GENE INFORMATION	
Gene Name	MOCS2 molybdenum cofactor synthesis 2 [Homo sapiens]
Official Symbol	MOCS2
Synonyms	MOCS2; molybdenum cofactor synthesis 2; molybdopterin synthase catalytic subunit; MOCO1; MOCO1-A; MOCO1-B; MPT synthase large subunit; sulfur carrier protein MOCS2A; molybdopterin-synthase large subunit; molybdopterin-synthase small subunit; molybdenum cofactor synthesis protein 2A; molybdenum cofactor synthesis protein 2B; molybdenum cofactor biosynthesis protein E; molybdopterin synthase sulfur carrier subunit; molybdenum cofactor synthesis protein 2 large subunit; molybdenum cofactor synthesis protein 2 small subunit; MPTS; MCBPE; MOCS2A; MOCS2B;
Gene ID	4338
mRNA Refseq	NM_004531
Protein Refseq	NP_004522
MIM	603708
UniProt ID	O96007

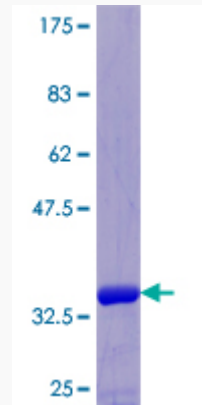
 Tel: 1-631-559-9269 1-516-512-3133

 Email: info@creative-biomart.com  Fax: 1-631-938-8127

 45-1 Ramsey Road, Shirley, NY 11967, USA

Quality Control

Testing:



12.5% SDS-PAGE Stained with Coomassie Blue.

 Tel: 1-631-559-9269 1-516-512-3133

 Email: info@creative-biomart.com  Fax: 1-631-938-8127

 45-1 Ramsey Road, Shirley, NY 11967, USA