

# Recombinant Human MOCS2 Protein, Myc/DDK-tagged, C13 and N15-labeled

Cat. No. MOCS2-920H Lot. No. (See product label)

## SPECIFICATION

<b>Product Overview</b>	MOCS2 MS Standard C13 and N15-labeled recombinant protein (NP_789776) with a C-terminal MYC/DDK tag, was expressed in HEK293 cells.
<b>Species</b>	Human
<b>Source</b>	HEK293
<b>Description</b>	Eukaryotic molybdoenzymes use a unique molybdenum cofactor (MoCo) consisting of a pterin, termed molybdopterin, and the catalytically active metal molybdenum. MoCo is synthesized from precursor Z by the heterodimeric enzyme molybdopterin synthase. The large and small subunits of molybdopterin synthase are both encoded from this gene by overlapping open reading frames. The proteins were initially thought to be encoded from a bicistronic transcript. They are now thought to be encoded from monocistronic transcripts. Alternatively spliced transcripts have been found for this locus that encode the large and small subunits.
<b>Molecular Mass</b>	9.6 kDa
<b>AA Sequence</b>	MVPLCQVEVLYFAKSAEITGVRSETISVPQEIKALQLWKEIETRHPGLADVRNQIIFAV RQEYVELGDQLLVLPQGDIEIAVIPPISSGGTRTRPLEQKLISEEDLAANDILDYKDDDDK V
<b>Purity</b>	> 80% as determined by SDS-PAGE and Coomassie blue staining

 Tel: 1-631-559-9269 1-516-512-3133

 Email: [info@creative-biomart.com](mailto:info@creative-biomart.com)  Fax: 1-631-938-8127

 45-1 Ramsey Road, Shirley, NY 11967, USA

<b>Stability</b>	Stable for 3 months from receipt of products under proper storage and handling conditions.
<b>Storage</b>	Store at -80 centigrade. Avoid repeated freeze-thaw cycles.
<b>Concentration</b>	50 µg/mL as determined by BCA
<b>Storage Buffer</b>	100 mM glycine, 25 mM Tris-HCl, pH 7.3.
<b>GENE INFORMATION</b>	
<b>Gene Name</b>	<a href="#">MOCS2 molybdenum cofactor synthesis 2 [ Homo sapiens (human) ]</a>
<b>Official Symbol</b>	<a href="#">MOCS2</a>
<b>Synonyms</b>	MOCS2; molybdenum cofactor synthesis 2; molybdopterin synthase catalytic subunit; MOCO1; MOCO1-A; MOCO1-B; MPT synthase large subunit; sulfur carrier protein MOCS2A; molybdopterin-synthase large subunit; molybdopterin-synthase small subunit; molybdenum cofactor synthesis protein 2A; molybdenum cofactor synthesis protein 2B; molybdenum cofactor biosynthesis protein E; molybdopterin synthase sulfur carrier subunit; molybdenum cofactor synthesis protein 2 large subunit; molybdenum cofactor synthesis protein 2 small subunit; MPTS; MCBPE; MOCS2A; MOCS2B;
<b>Gene ID</b>	<a href="#">4338</a>
<b>mRNA Refseq</b>	<a href="#">NM_176806</a>
<b>Protein Refseq</b>	<a href="#">NP_789776</a>
<b>MIM</b>	<a href="#">603708</a>

 Tel: 1-631-559-9269 1-516-512-3133

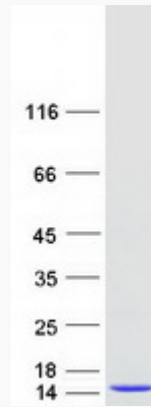
 Email: [info@creative-biomart.com](mailto:info@creative-biomart.com)  Fax: 1-631-938-8127

 45-1 Ramsey Road, Shirley, NY 11967, USA

UniProt ID

O96007

SDS-PAGE



 Tel: 1-631-559-9269 1-516-512-3133

 Email: [info@creative-biomart.com](mailto:info@creative-biomart.com)  Fax: 1-631-938-8127

 45-1 Ramsey Road, Shirley, NY 11967, USA