

Recombinant Human myelin oligodendrocyte glycoprotein Protein, His tagged

Cat. No. MOG-041H Lot. No. (See product label)

SPECIFICATION

Product Overview The sequence (Accession # CAQ10087) corresponding to the extracellular domain of human MOG along with a 6xHis tag was expressed in E. coli. The recombinant human MOG (H-rMOG) was purified from urea denatured bacterial lysate using immobilized metal affinity chromatography (IMAC).

Species Human

Source E.coli

ProteinLength 1-125aa

Description The product of this gene is a membrane protein expressed on the oligodendrocyte cell surface and the outermost surface of myelin sheaths. Due to this localization, it is a primary target antigen involved in immune-mediated demyelination. This protein may be involved in completion and maintenance of the myelin sheath and in cell-cell communication. Alternatively spliced transcript variants encoding different isoforms have been identified.

Tag 6xHis

Form Solution

Molecular Mass 14.2 kDa

 Tel: 1-631-559-9269 1-516-512-3133

 Email: info@creative-biomart.com  Fax: 1-631-938-8127

 45-1 Ramsey Road, Shirley, NY 11967, USA

Bio-activity	Female C57BL/6 mice (8-10 weeks old) were immunized (s.c.) with 100 µg/animal of human rMOG in complete Freund's adjuvant followed by 400 ng/mouse of pertussis toxin on day 0 and day 2 (i.p.). Mice showed EAE symptoms such as limp tail, hind limb weakness, or hind limb paralysis after induction. DA rats immunized with 50 µg/animal of human rMOG at the base of the tail (s.c.) displayed EAE symptoms as well. Please note that no other EAE induction protocols were tested including IFA/cytokine model.
Resuspension condition	Human MOG must be thoroughly mixed directly with Complete Freund's Adjuvant (CFA). Do not dilute recombinant human MOG with buffers that have pH greater than 4.5. Protein will precipitate at pH higher than 4.5.
Endotoxin	Less than 0.1 EU per 1 µg of the protein as determined by Limulus Amebocyte Lysate (LAL) quantitative kinetic assay.
Purity	≥95% by SDS-PAGE
Applications	ELISA; in vivo studies; Western Blotting
Usage	Research use
Storage	Store at -80 centigrade. Avoid repeated freeze-thaw cycles.
Concentration	1 mg/mL
Storage Buffer	25 mM sodium acetate buffer (pH=4.0)
References	<ol style="list-style-type: none"> 1. Jayaram Bettadapura et.al. (1998) Journal of Neurochemistry 70 (4): 1593-1599 2. Alfred R Oliver et al (2003) Journal of Immunology 171:462-468 3. Hans-Christian Von Budingen et.al. (2001) Journal of Clinical Immunology 21 (3):

 Tel: 1-631-559-9269 1-516-512-3133

 Email: info@creative-biomart.com  Fax: 1-631-938-8127

 45-1 Ramsey Road, Shirley, NY 11967, USA

155-170

4. Jerri-Anne Lyons et.al. (1999) European Journal of Immunology 29: 3432-3439
5. Hans-Christian Von Budingen et.al. (2004) European Journal of Immunology 34: 2072-2083

GENE INFORMATION

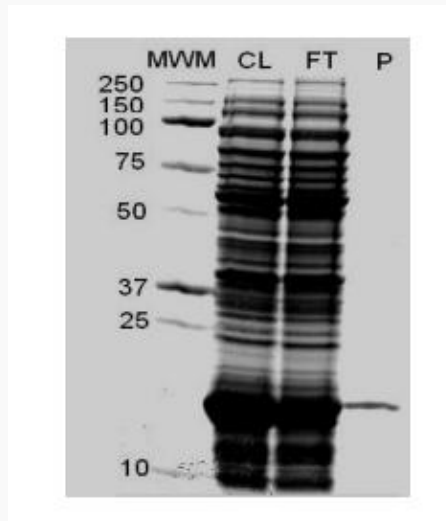
Gene Name	MOG myelin oligodendrocyte glycoprotein [Homo sapiens (human)]
Official Symbol	MOG
Synonyms	MOG; myelin oligodendrocyte glycoprotein; myelin-oligodendrocyte glycoprotein; MOG Ig-AluB; MOG alpha-5; MOGIG2; NRCLP7; MGC26137
Gene ID	4340
mRNA Refseq	NM_001008228
Protein Refseq	NP_001008229
MIM	159465
UniProt ID	Q16653

 Tel: 1-631-559-9269 1-516-512-3133

 Email: info@creative-biomart.com  Fax: 1-631-938-8127

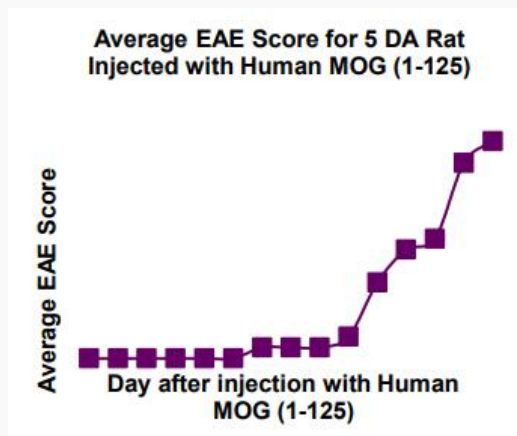
 45-1 Ramsey Road, Shirley, NY 11967, USA

Human rMOG on SDS-PAGE



Purified H-rMOG was loaded onto 10-20% Tris-HCl gel at 3 µg/well and resolved at 200V for 60 minutes. Protein markers and purified H-rMOG (14.2 kDa) are indicated. CL=Crude Cell Lysate, FT=Flow Through, and P=Purified H-rMOG.

An Example of EAE Data Using Human rMOG



Five female Dark Agouti (DA) rats (8 weeks old) were injected with 50 µg/animal of Human rMOG in CFA (total injection volume is 100 µL/animal) subcutaneously (s.c.)


Tel: 1-631-559-9269 1-516-512-3133

Email: info@creative-biomart.com Fax: 1-631-938-8127

45-1 Ramsey Road, Shirley, NY 11967, USA



at the base of the tail. EAE scores may vary due to the animal health and housing conditions. This graph is for the reference only.

 Tel: 1-631-559-9269 1-516-512-3133

 Email: info@creative-biomart.com  Fax: 1-631-938-8127

 45-1 Ramsey Road, Shirley, NY 11967, USA