

Recombinant Human MOG Protein, Myc/DDK-tagged, C13 and N15-labeled

Cat. No. MOG-3593H **Lot. No.** (See product label)

SPECIFICATION

Product Overview	MOG MS Standard C13 and N15-labeled recombinant protein (NP_996532) with a C-terminal MYC/DDK tag, was expressed in HEK293 cells.
Species	Human
Source	HEK293
Description	The product of this gene is a membrane protein expressed on the oligodendrocyte cell surface and the outermost surface of myelin sheaths. Due to this localization, it is a primary target antigen involved in immune-mediated demyelination. This protein may be involved in completion and maintenance of the myelin sheath and in cell-cell communication. Alternatively spliced transcript variants encoding different isoforms have been identified.
Molecular Mass	25.1 kDa
AA Sequence	MASLSRPSLPSCLCSFLLLLLLQVSSSYAGQFRVIGPRHPICALVGDEVELPCRISPG KNATGMEVGVWYRPPFSRVVHLYRNGKDQDGDQAPEYRGRTELLKDAIGEGKVTLR IRNVRFSDDEGGFTCFRRDHSYQEEAAMELKVEDPFYWVSPGVLVLLAVLPVLLLQIT VGLIFLCLQYRLRGKLR AEIENLHRTFDPHFLRVPCWKITLFVIVPVLGPLVALIICYNW LHRRLAGQFLEELRNPFTRTRPLEQKLISEEDLAANDILDYKDDDDKV
Purity	> 80% as determined by SDS-PAGE and Coomassie blue staining

 Tel: 1-631-559-9269 1-516-512-3133

 Email: info@creative-biomart.com  Fax: 1-631-938-8127

 45-1 Ramsey Road, Shirley, NY 11967, USA

Stability	Stable for 3 months from receipt of products under proper storage and handling conditions.
Storage	Store at -80 centigrade. Avoid repeated freeze-thaw cycles.
Concentration	50 µg/mL as determined by BCA
Storage Buffer	100 mM glycine, 25 mM Tris-HCl, pH 7.3.

GENE INFORMATION

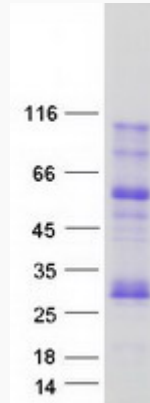
Gene Name	MOG myelin oligodendrocyte glycoprotein [Homo sapiens (human)]
Official Symbol	MOG
Synonyms	MOG; myelin oligodendrocyte glycoprotein; myelin-oligodendrocyte glycoprotein; MOG Ig-AluB; MOG alpha-5; MOGIG2; NRCLP7; MGC26137;
Gene ID	4340
mRNA Refseq	NM_206809
Protein Refseq	NP_996532
MIM	159465
UniProt ID	Q16653

 Tel: 1-631-559-9269 1-516-512-3133

 Email: info@creative-biomart.com  Fax: 1-631-938-8127

 45-1 Ramsey Road, Shirley, NY 11967, USA

SDS-PAGE



 Tel: 1-631-559-9269 1-516-512-3133

 Email: info@creative-biomart.com  Fax: 1-631-938-8127

 45-1 Ramsey Road, Shirley, NY 11967, USA