

## Recombinant Human MOG Protein (Gly30-Gly154), C-His tagged

Cat. No. MOG-4584H    Lot. No. (See product label)

### SPECIFICATION

<b>Product Overview</b>	Recombinant human MOG (Gly30-Gly154) fused with the C-terminal His tag was expressed in Mammalian cells.
<b>Species</b>	Human
<b>Source</b>	Mammalian Cells
<b>ProteinLength</b>	Gly30-Gly154
<b>Form</b>	Lyophilized powder/frozen liquid
<b>Molecular Mass</b>	13.75 kDa
<b>Purity</b>	>90% as determined by SDS-PAGE.
<b>Notes</b>	For research use only.
<b>Storage</b>	Use a manual defrost freezer and avoid repeated freeze thaw cycles. Store at 2 to 8 centigrade for one week. Store at -20 to -80 centigrade for twelve months from the date of receipt.
<b>Storage Buffer</b>	Supplied as solution form in PBS or lyophilized from PBS.
<b>Reconstitution</b>	Reconstitute in sterile water for a stock solution.

 Tel: 1-631-559-9269    1-516-512-3133

 Email: [info@creative-biomart.com](mailto:info@creative-biomart.com)     Fax: 1-631-938-8127

 45-1 Ramsey Road, Shirley, NY 11967, USA

**Shipping** They are shipped out with dry ice/blue ice unless customers require otherwise.

## GENE INFORMATION

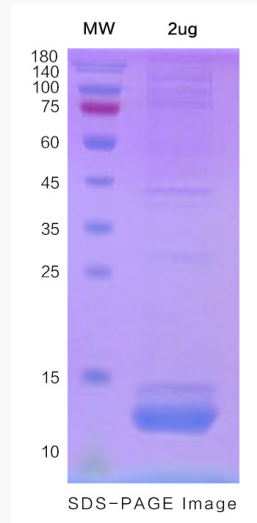
<b>Gene Name</b>	MOG myelin oligodendrocyte glycoprotein [ Homo sapiens (human) ]
<b>Official Symbol</b>	MOG
<b>Synonyms</b>	MOG; myelin oligodendrocyte glycoprotein; myelin-oligodendrocyte glycoprotein; MOG Ig-AluB; MOG alpha-5; MOGIG2; NRCLP7; MGC26137;
<b>Gene ID</b>	4340
<b>mRNA Refseq</b>	NM_001008228
<b>Protein Refseq</b>	NP_001008229
<b>MIM</b>	159465
<b>UniProt ID</b>	Q16653

 Tel: 1-631-559-9269 1-516-512-3133

 Email: [info@creative-biomart.com](mailto:info@creative-biomart.com)  Fax: 1-631-938-8127

 45-1 Ramsey Road, Shirley, NY 11967, USA

**SDS-PAGE**



 Tel: 1-631-559-9269 1-516-512-3133

 Email: [info@creative-biomart.com](mailto:info@creative-biomart.com)  Fax: 1-631-938-8127

 45-1 Ramsey Road, Shirley, NY 11967, USA