

Recombinant Human MOG Protein, GST-tagged

Cat. No. MOG-5466H **Lot. No.** (See product label)

SPECIFICATION

Product Overview	Human MOG full-length ORF (AAH35938, 1 a.a. - 295 a.a.) recombinant protein with GST-tag at N-terminal.
Species	Human
Source	Wheat Germ
Description	The product of this gene is a membrane protein expressed on the oligodendrocyte cell surface and the outermost surface of myelin sheaths. Due to this localization, it is a primary target antigen involved in immune-mediated demyelination. This protein may be involved in completion and maintenance of the myelin sheath and in cell-cell communication. Alternatively spliced transcript variants encoding different isoforms have been identified. [provided by RefSeq]
Molecular Mass	58.19 kDa
AA Sequence	MASLSRPSLPSCLCSFLLLLLLQVSSSYAGQFRVIGPRHPICALVGDEVELPCRISPG KNATGMEVGWYRPPFSRVVHLYRNGKDQDQDQAPEYRGRTELLKDAIGEGKVTLR IRNVRFSDDEGGFTCFRRDHSYQEEAAMELKVEDPFYVWVSPGVLVLLAVLPVLLLQIT VGLVFLCLQYRLRGKLR AEIENLHRTFDPHFLRVPCWKITLFVIVPVLGPLVALIICYN WLHRRLAGQFLEELRKFSSLCYKQRIKSQERETEATRGRGGLLRDHIPRGKEELES GGGKTPPGR
Applications	Enzyme-linked Immunoabsorbent Assay Western Blot (Recombinant protein)

 Tel: 1-631-559-9269 1-516-512-3133

 Email: info@creative-biomart.com  Fax: 1-631-938-8127

 45-1 Ramsey Road, Shirley, NY 11967, USA

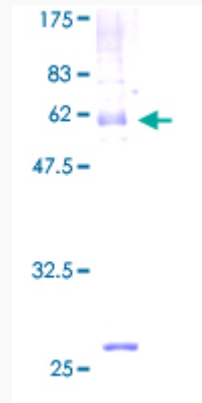


	Antibody Production Protein Array
Notes	Best use within three months from the date of receipt of this protein.
Storage	Store at -80 centigrade. Aliquot to avoid repeated freezing and thawing.
Storage Buffer	50 mM Tris-HCl, 10 mM reduced Glutathione, pH=8.0 in the elution buffer.
GENE INFORMATION	
Gene Name	MOG myelin oligodendrocyte glycoprotein [Homo sapiens]
Official Symbol	MOG
Synonyms	MOG; myelin oligodendrocyte glycoprotein; myelin-oligodendrocyte glycoprotein; MOG Ig-AluB; MOG alpha-5; MOGIG2; NRCLP7; MGC26137;
Gene ID	4340
mRNA Refseq	NM_001008228
Protein Refseq	NP_001008229
MIM	159465
UniProt ID	Q16653

Tel: 1-631-559-9269 1-516-512-3133

Email: info@creative-biomart.com Fax: 1-631-938-8127

45-1 Ramsey Road, Shirley, NY 11967, USA



Quality Control

Testing:

12.5% SDS-PAGE Stained with Coomassie Blue.

 Tel: 1-631-559-9269 1-516-512-3133

 Email: info@creative-biomart.com  Fax: 1-631-938-8127

 45-1 Ramsey Road, Shirley, NY 11967, USA