

Recombinant Human MON1A Protein (205-555 aa), His-SUMO-tagged

Cat. No. MON1A-1058H **Lot. No.** (See product label)

SPECIFICATION

Product Overview Recombinant Human MON1A Protein (205-555 aa) is produced by E. coli expression system. This protein is fused with a 6xHis-SUMO tag at the N-terminal. Research Area: Signal Transduction. Protein Description: Partial.

Species Human

Source E.coli

ProteinLength 205-555 aa

Description Plays an important in mbrane trafficking through the secretory apparatus. Not involved in endocytic trafficking to lysosomes.

Form Tris-based buffer, 50% glycerol

Molecular Mass 56.2 kDa

AA Sequence

DGYKVVFVRRSPLVLVAVARTRQSAQELAQELLYIYYQILSLLTGAQLSHIFQQKQNY
DLRRLLSGSERITDNLQLMARDPSFLMGAARCLPLAAAVRDTVSASLQQARARSLV
FSILLARNQLVALVRRKDQFLHPIDLHLLFNLISSSSSFREGEAWTPVCLPKFNAAGFF
HAHISYLEPDTDLCLLLVDREDFFAVSDCRRRFQERLRKGAHLALREALRTPYY
SVAQVGIPDLRHFLYKSKSSGLFTSPEIEAPYTSEEEQERLLGLYQYLHSRAHNASR
PLKTIYYTGPENLLAWVTGAFELYMCYSPLGTKASAVSAIHKLMRWIRKEEDRLFIL
TPLTY

 Tel: 1-631-559-9269 1-516-512-3133

 Email: info@creative-biomart.com  Fax: 1-631-938-8127

 45-1 Ramsey Road, Shirley, NY 11967, USA

Purity	> 90% as determined by SDS-PAGE.
Notes	Repeated freezing and thawing is not recommended. Store working aliquots at 4 centigrade for up to one week.
Storage	The shelf life is related to many factors, storage state, buffer ingredients, storage temperature and the stability of the protein itself. Generally, the shelf life of liquid form is 6 months at -20 centigrade/-80 centigrade. The shelf life of lyophilized form is 12 months at -20 centigrade/-80 centigrade.
Concentration	A hardcopy of COA with concentration instruction is sent along with the products.

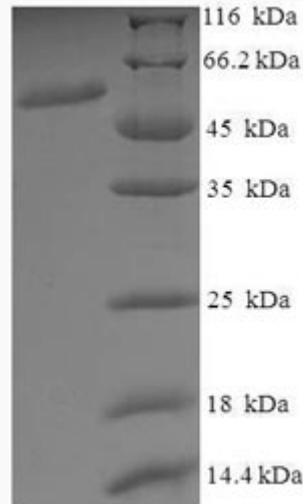
GENE INFORMATION

Gene Name	MON1A MON1 homolog A, secretory trafficking associated [Homo sapiens (human)]
Official Symbol	MON1A
Synonyms	SAND1;
Gene ID	84315
UniProt ID	Q86VX9

 Tel: 1-631-559-9269 1-516-512-3133

 Email: info@creative-biomart.com  Fax: 1-631-938-8127

 45-1 Ramsey Road, Shirley, NY 11967, USA



(Tris-Glycine gel) Discontinuous SDS-PAGE (reduced) with 5% enrichment gel and 15% separation gel.

 Tel: 1-631-559-9269 1-516-512-3133

 Email: info@creative-biomart.com  Fax: 1-631-938-8127

 45-1 Ramsey Road, Shirley, NY 11967, USA