

Recombinant Human MON1A Protein, GST-tagged

Cat. No. MON1A-5472H Lot. No. (See product label)

SPECIFICATION

Product Overview	Human MON1A full-length ORF (NP_115731.1, 1 a.a. - 555 a.a.) recombinant protein with GST-tag at N-terminal.
Species	Human
Source	Wheat Germ
Description	MON1A (MON1 Homolog A, Secretory Trafficking Associated) is a Protein Coding gene. Diseases associated with MON1A include Extrahepatic Bile Duct Adenocarcinoma and Space Motion Sickness. Among its related pathways are RAB GEFs exchange GTP for GDP on RABs and Vesicle-mediated transport. An important paralog of this gene is MON1B.
Molecular Mass	88.5 kDa
AA Sequence	MATDMQRKRSSECLDGLTTPSDGQSMERAESPTPGMAQGMPEGAGQEGAMFVH ARSYEDLTESEDGAASGDSHKEGTRGPPPLPTDMRQISQDFSELSTQLTGWARDLQ EEMPLGSSSEDWLEPPGAVGRPATEPPREGTTEGDEEDATEAWRLHQKHVFLSEA GKPVYSRYGSEELSSSTMGMVALVSFLEADKNAIRSIHADGYKVVVFRRSPLVLA VARTRQSAQELAQELLYIYYQILSLLTGAQLSHIFQQKQNYDLRRLLSGSERITDNLQ LMARDPSFLMGAARCLPLAAAVRDTVSAASLQQARARSLVFSILLARNQLVALVRRKD QFLHPIDLHLLFNLISSSSSFREGEAWTPVCLPKFNAAGFFHAHISYLEPDTDLCLLLV STDREDFFAVSDCRRRFQERLRKRGALHALREALRTPYYSVAQVGIPDLRHFLYKSK SSSLFTSPEIEAPYTSEEEQERLLGLYQYLHSRAHNASRPLKTIYYTGPENLLAWVT

 Tel: 1-631-559-9269 1-516-512-3133

 Email: info@creative-biomart.com  Fax: 1-631-938-8127

 45-1 Ramsey Road, Shirley, NY 11967, USA

GAFELYMCYSPLGKASAVSAIHKLMRWIRKEEDRLFILTPLTY

Applications

Enzyme-linked Immunoabsorbent Assay
 Western Blot (Recombinant protein)
 Antibody Production
 Protein Array

Notes

Best use within three months from the date of receipt of this protein.

Storage

Store at -80 centigrade. Aliquot to avoid repeated freezing and thawing.

Storage Buffer

50 mM Tris-HCl, 10 mM reduced Glutathione, pH=8.0 in the elution buffer.

GENE INFORMATION

Gene Name

MON1A MON1 homolog A, secretory trafficking associated [Homo sapiens (human)]

Official Symbol

MON1A

Synonyms

MON1A; MON1 homolog A, secretory trafficking associated; SAND1; vacuolar fusion protein MON1 homolog A; MON1 secretory trafficking family member A

Gene ID

84315

mRNA Refseq

NM_001142501

Protein Refseq

NP_001135973

MIM

611464

UniProt ID

Q86VX9

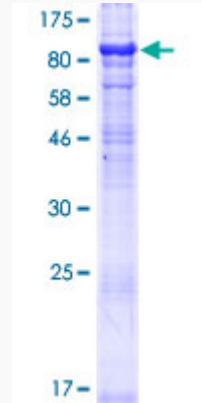
 Tel: 1-631-559-9269 1-516-512-3133

 Email: info@creative-biomart.com  Fax: 1-631-938-8127

 45-1 Ramsey Road, Shirley, NY 11967, USA

Quality Control

Testing:



12.5% SDS-PAGE Stained with Coomassie Blue.

 Tel: 1-631-559-9269 1-516-512-3133

 Email: info@creative-biomart.com  Fax: 1-631-938-8127

 45-1 Ramsey Road, Shirley, NY 11967, USA