

Recombinant Human MORF4L2 Protein (Met1-Leu288), C-His tagged

Cat. No. MORF4L2-5361H Lot. No. (See product label)

SPECIFICATION

Product Overview	Recombinant human MORF4L2 (Met1-Leu288) fused with the C-terminal His tag was expressed in E. coli.
Species	Human
Source	E.coli
ProteinLength	Met1-Leu288
Form	Lyophilized powder/frozen liquid
Molecular Mass	31.68 kDa
Purity	>90% as determined by SDS-PAGE.
Notes	For research use only.
Storage	Use a manual defrost freezer and avoid repeated freeze thaw cycles. Store at 2 to 8 centigrade for one week. Store at -20 to -80 centigrade for twelve months from the date of receipt.
Storage Buffer	Supplied as solution form in PBS or lyophilized from PBS.
Reconstitution	Reconstitute in sterile water for a stock solution.

 Tel: 1-631-559-9269 1-516-512-3133

 Email: info@creative-biomart.com  Fax: 1-631-938-8127

 45-1 Ramsey Road, Shirley, NY 11967, USA

Shipping

They are shipped out with dry ice/blue ice unless customers require otherwise.

GENE INFORMATION**Gene Name**

MORF4L2 mortality factor 4 like 2 [Homo sapiens (human)]

Official Symbol

MORF4L2

Synonyms

MORF4L2; mortality factor 4 like 2; mortality factor 4-like protein 2; KIAA0026; MORF related gene X; MRGX; MSL3-2 protein; protein MSL3-2; MORF-related gene X protein; transcription factor-like protein MRGX; MORFL2;

Gene ID

9643

mRNA Refseq

NM_001142418

Protein Refseq

NP_001135890

MIM

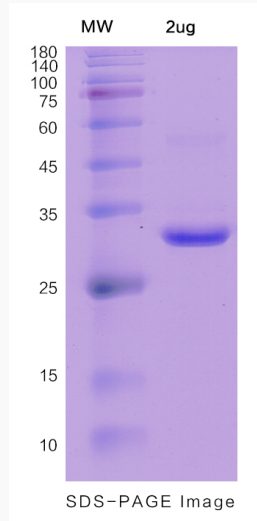
300409

UniProt ID

Q15014

 Tel: 1-631-559-9269 1-516-512-3133 Email: info@creative-biomart.com  Fax: 1-631-938-8127 45-1 Ramsey Road, Shirley, NY 11967, USA

SDS-PAGE



 Tel: 1-631-559-9269 1-516-512-3133

 Email: info@creative-biomart.com  Fax: 1-631-938-8127

 45-1 Ramsey Road, Shirley, NY 11967, USA