

Recombinant Human MORF4L2 Protein, GST-tagged

Cat. No. MORF4L2-5479H **Lot. No.** (See product label)

SPECIFICATION

Product Overview	Human MORF4L2 full-length ORF (NP_036418.1, 1 a.a. - 288 a.a.) recombinant protein with GST-tag at N-terminal.
Species	Human
Source	Wheat Germ
Description	MORF4L2 (Mortality Factor 4 Like 2) is a Protein Coding gene. Diseases associated with MORF4L2 include Paraneoplastic Cerebellar Degeneration. Among its related pathways are Chromatin organization. An important paralog of this gene is MORF4L1.
Molecular Mass	58.7 kDa
AA Sequence	MSSRKQGSQPRGQQSAEEENFKKPTRSNMQRSKMRGASSGKKTAGPQQKNLEPALPGRWGGRSAENPPSGSVRKTRKNKQKTPGNGDGGSTSEAPQPPRKKRARADPTVESEAFKNRMEVKVKIPEELKPWLVEDWDLVTRQKQLFQLPAKKNVDAILEEYANCKKSQGNVDNKEYAVNEVVAGIKEYFNVMLGTQLLYKFERPQYAEILLAHPDAPMSQVYGAPHLRLFVIRIGAMLAYTPLDEKSLALLLGYLHDFLKYLAKNASASLFTASDYKVASAEYHRKAL
Applications	Enzyme-linked Immunoabsorbent Assay Western Blot (Recombinant protein) Antibody Production Protein Array

 Tel: 1-631-559-9269 1-516-512-3133

 Email: info@creative-biomart.com  Fax: 1-631-938-8127

 45-1 Ramsey Road, Shirley, NY 11967, USA

Notes	Best use within three months from the date of receipt of this protein.
Storage	Store at -80 centigrade. Aliquot to avoid repeated freezing and thawing.
Storage Buffer	50 mM Tris-HCl, 10 mM reduced Glutathione, pH=8.0 in the elution buffer.

GENE INFORMATION

Gene Name	MORF4L2 mortality factor 4 like 2 [Homo sapiens]
Official Symbol	MORF4L2
Synonyms	MORF4L2; mortality factor 4 like 2; mortality factor 4-like protein 2; KIAA0026; MORF related gene X; MRGX; MSL3-2 protein; protein MSL3-2; MORF-related gene X protein; transcription factor-like protein MRGX; MORFL2;
Gene ID	9643
mRNA Refseq	NM_001142418
Protein Refseq	NP_001135890
MIM	300409
UniProt ID	Q15014

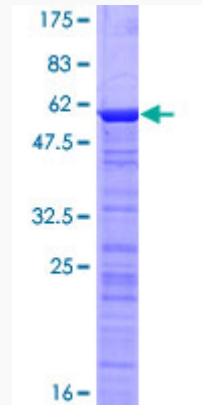
 Tel: 1-631-559-9269 1-516-512-3133

 Email: info@creative-biomart.com  Fax: 1-631-938-8127

 45-1 Ramsey Road, Shirley, NY 11967, USA

Quality Control

Testing:



12.5% SDS-PAGE Stained with Coomassie Blue.

 Tel: 1-631-559-9269 1-516-512-3133

 Email: info@creative-biomart.com  Fax: 1-631-938-8127

 45-1 Ramsey Road, Shirley, NY 11967, USA