

## Active Recombinant Human MOS Protein, GST-tagged

Cat. No. MOS-5484H Lot. No. (See product label)

### SPECIFICATION

<b>Product Overview</b>	Human MOS (NP_005363.1, 1 a.a. - 346 a.a.) full-length recombinant protein with GST tag expressed in baculovirus infected Sf21 cells.
<b>Species</b>	Human
<b>Source</b>	Insect Cells
<b>Description</b>	MOS is a serine/threonine kinase that activates the MAP kinase cascade through direct phosphorylation of the MAP kinase activator MEK (MAP2K1; MIM 176872) (Prasad et al., 2008 [PubMed 18246541]).[supplied by OMIM
<b>Form</b>	Liquid
<b>Bio-activity</b>	The activity was determined by ELISA. The enzyme was incubated with GST-fused substrate protein, and after stopping kinase reaction by EDTA, the reaction solution was transferred into glutathione-coated plate. Phosphorylation was detected by anti-phospho antibody and HRP-labeled anti-rabbit IgG(or HRP-labeled anti-mouse IgG). Substrate: MAP2K1 [inactive mutant]. ATP: 100 µM.
<b>Molecular Mass</b>	65 kDa
<b>Purity</b>	77 % by SDS-PAGE/CBB staining
<b>Applications</b>	Functional Study

 Tel: 1-631-559-9269 1-516-512-3133

 Email: [info@creative-biomart.com](mailto:info@creative-biomart.com)  Fax: 1-631-938-8127

 45-1 Ramsey Road, Shirley, NY 11967, USA

SDS-PAGE

**Storage** Store at -80 centigrade. Aliquot to avoid repeated freezing and thawing.

**Storage Buffer** In 50 mM Tris-HCl, 150 mM NaCl, pH 7.5 (0.05% Brij35, 1 mM DTT, 10% glycerol)

## GENE INFORMATION

**Gene Name** [MOS v-mos Moloney murine sarcoma viral oncogene homolog \[ Homo sapiens \]](#)

**Official Symbol** [MOS](#)

**Synonyms**

MOS; v-mos Moloney murine sarcoma viral oncogene homolog; proto-oncogene serine/threonine-protein kinase mos; c-mos; proto-oncogene c-Mos; oocyte maturation factor mos; oncogene MOS, Moloney murine sarcoma virus; MSV; MGC119962; MGC119963;

**Gene ID** [4342](#)

**mRNA Refseq** [NM\\_005372](#)

**Protein Refseq** [NP\\_005363](#)

**MIM** [190060](#)

**UniProt ID** [P00540](#)

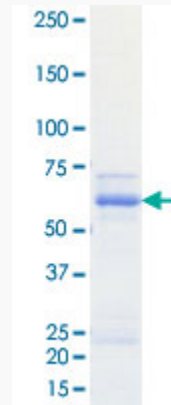
 Tel: 1-631-559-9269 1-516-512-3133

 Email: [info@creative-biomart.com](mailto:info@creative-biomart.com)  Fax: 1-631-938-8127

 45-1 Ramsey Road, Shirley, NY 11967, USA

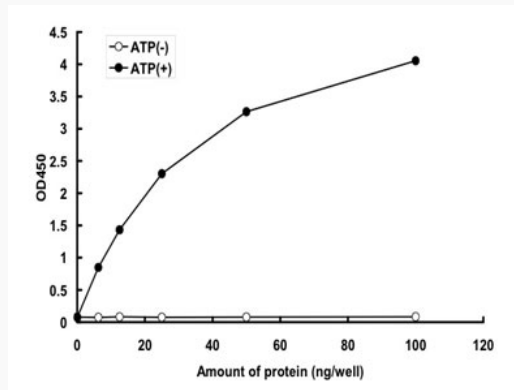
**Quality Control**

**Testing:**



Loading 1  $\mu$ g protein in SDS-PAGE

**Result of activity analysis**



 Tel: 1-631-559-9269 1-516-512-3133

 Email: [info@creative-biomart.com](mailto:info@creative-biomart.com)  Fax: 1-631-938-8127

 45-1 Ramsey Road, Shirley, NY 11967, USA