

Recombinant Human MOS Protein, GST-tagged

Cat. No. MOS-5485H **Lot. No.** (See product label)

SPECIFICATION

| | |
|-------------------------|---|
| Product Overview | Human MOS full-length ORF (NP_005363.1, 1 a.a. - 346 a.a.) recombinant protein with GST-tag at N-terminal. |
| Species | Human |
| Source | Wheat Germ |
| Description | MOS is a serine/threonine kinase that activates the MAP kinase cascade through direct phosphorylation of the MAP kinase activator MEK (MAP2K1; MIM 176872) (Prasad et al., 2008 [PubMed 18246541]).[supplied by OMIM] |
| Molecular Mass | 64.2 kDa |
| AA Sequence | MPSPLALRPYLRFSEFSPVSDARPCSSPELPAKLLLGATLPRAPRLPRRLAWCSIDW EQVCLLQRLGAGGFGSVYKATYRGVPVAIKQVNKCTKNRLASRRSFWAELNVARLR HDNIVRVVAASRTPAGSNSLGTIIMEFGGNVTLHQVIYGAAGHPEGDAGEPHCRTG GQLSLGKCLKYSLDVVNGLLFLHSQSIVHLDLKPANILISEQDVCKISDFGCSEKLEDL LCFQTPSYPLGGTYTHRAPELLKGEGVTPKADIYSFAITLWQM TTKQAPYSGERQHI LYAVVAYDLRPSLSAAVFEDSLPGQRLGDVIQRCWRPSAAQRPSARLLLVDLTSKA ELG |
| Applications | Enzyme-linked Immunoabsorbent Assay Western Blot (Recombinant protein) Antibody Production Protein Array |

 Tel: 1-631-559-9269 1-516-512-3133

 Email: info@creative-biomart.com  Fax: 1-631-938-8127

 45-1 Ramsey Road, Shirley, NY 11967, USA

| | |
|-------------------------|---|
| Notes | Best use within three months from the date of receipt of this protein. |
| Storage | Store at -80 centigrade. Aliquot to avoid repeated freezing and thawing. |
| Storage Buffer | 50 mM Tris-HCl, 10 mM reduced Glutathione, pH=8.0 in the elution buffer. |
| GENE INFORMATION | |
| Gene Name | MOS v-mos Moloney murine sarcoma viral oncogene homolog [Homo sapiens] |
| Official Symbol | MOS |
| Synonyms | MOS; v-mos Moloney murine sarcoma viral oncogene homolog; proto-oncogene serine/threonine-protein kinase mos; c-mos; proto-oncogene c-Mos; oocyte maturation factor mos; oncogene MOS, Moloney murine sarcoma virus; MSV; MGC119962; MGC119963; |
| Gene ID | 4342 |
| mRNA Refseq | NM_005372 |
| Protein Refseq | NP_005363 |
| MIM | 190060 |
| UniProt ID | P00540 |

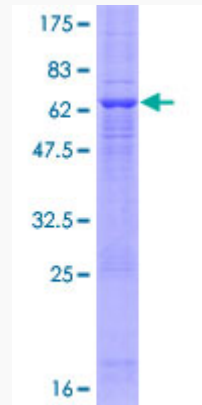
 Tel: 1-631-559-9269 1-516-512-3133

 Email: info@creative-biomart.com  Fax: 1-631-938-8127

 45-1 Ramsey Road, Shirley, NY 11967, USA

Quality Control

Testing:



12.5% SDS-PAGE Stained with Coomassie Blue.

 Tel: 1-631-559-9269 1-516-512-3133

 Email: info@creative-biomart.com  Fax: 1-631-938-8127

 45-1 Ramsey Road, Shirley, NY 11967, USA