

Recombinant Human MPC1 protein, His & GST-tagged

Cat. No. MPC1-1568H Lot. No. (See product label)

SPECIFICATION

Product Overview	Recombinant Human MPC1 aa. (Met1~Ala109 (Accession # Q9Y5U8)) fused with N-terminal His & GST tag was produced in E. coli cells.
Species	Human
Source	E.coli
ProteinLength	Met1~Ala109
Description	The protein encoded by this gene is part of an MPC1/MPC2 heterodimer that is responsible for transporting pyruvate into mitochondria. The encoded protein is found in the inner mitochondrial membrane. Defects in this gene are a cause of mitochondrial pyruvate carrier deficiency. Several transcript variants, some protein coding and one non-protein coding, have been found for this gene.
Form	Freeze-dried powder
Molecular Mass	Predicted Molecular Mass: 42.3kDa
Endotoxin	<1.0EU per 1ug (determined by the LAL method)
Purity	>90%
Applications	SDS-PAGE; WB; ELISA; IP.

 Tel: 1-631-559-9269 1-516-512-3133

 Email: info@creative-biomart.com  Fax: 1-631-938-8127

 45-1 Ramsey Road, Shirley, NY 11967, USA

Stability	The thermal stability is described by the loss rate. The loss rate was determined by accelerated thermal degradation test, that is, incubate the protein at 37°C for 48h, and no obvious degradation and precipitation were observed. The loss rate is less than 5% within the expiration date under appropriate storage condition.
Storage	Avoid repeated freeze/thaw cycles. Store at 2-8°C for one month. Aliquot and store at -80°C for 12 months.
Storage buffer	Supplied as lyophilized form in PBS, pH7.4, containing 5% trehalose, 0.01% sarcosyl.
Reconstitution	Reconstitute in sterile PBS, pH7.2-pH7.4.
Isoelectric Point	9.7

GENE INFORMATION

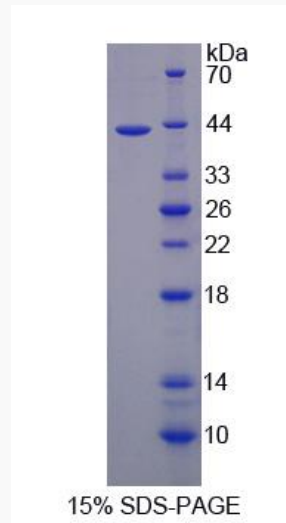
Gene Name	MPC1 mitochondrial pyruvate carrier 1 [Homo sapiens (human)]
Official Symbol	MPC1
Synonyms	MPC1; mitochondrial pyruvate carrier 1; MPYCD; BRP44L; CGI-129; SLC54A1; dJ68L15.3; mitochondrial pyruvate carrier 1; HSPC040 protein; brain protein 44-like protein
Gene ID	51660
mRNA Refseq	NM_016098.3
Protein Refseq	NP_057182.1
UniProt ID	Q9Y5U8

 Tel: 1-631-559-9269 1-516-512-3133

 Email: info@creative-biomart.com  Fax: 1-631-938-8127

 45-1 Ramsey Road, Shirley, NY 11967, USA

SDS-PAGE



 Tel: 1-631-559-9269 1-516-512-3133

 Email: info@creative-biomart.com  Fax: 1-631-938-8127

 45-1 Ramsey Road, Shirley, NY 11967, USA