

Recombinant Human MPG Protein (13-298 aa), His-tagged

Cat. No. MPG-1459H Lot. No. (See product label)

SPECIFICATION

Product Overview	Recombinant Human MPG Protein (13-298 aa) is produced by Yeast expression system. This protein is fused with a 6xHis tag at the N-terminal. Research Area: Epigenetics and Nuclear Signaling. Protein Description: Partial.
Species	Human
Source	Yeast
ProteinLength	13-298 aa
Description	Hydrolysis of the deoxyribose N-glycosidic bond to excise 3-methyladenine, and 7-methylguanine from the damaged DNA polymer formed by alkylation lesions.
Form	Tris-based buffer, 50% glycerol
Molecular Mass	33.5 kDa
AA Sequence	QFCRRMGQKKQRPARAGQPHSSSDAAQAPAEQPHSSSDAAQAPCPRERCLGPPT TPGPYRSIYFSSPKGHLTRLGLEFFDQPAVPLARAFLGQVLVRRLPNGTELRGRIVET EAYLGPEDAHAHSRGGRRQTPRNRGMFMKPGTLYVYIIYGMYFCMNISSQGDGACVL LRALEPLEGLETMRQLRSTLRKGTASRVLKDRELCGSPSKLCQALAINKSFDQRDLA QDEAVWLERGPLEPSEPAVVAAARVGVGHAGEWARKPLRFYVRGSPWVSVVDRV AEQDTQA
Purity	> 90% as determined by SDS-PAGE.

 Tel: 1-631-559-9269 1-516-512-3133

 Email: info@creative-biomart.com  Fax: 1-631-938-8127

 45-1 Ramsey Road, Shirley, NY 11967, USA

Notes	Repeated freezing and thawing is not recommended. Store working aliquots at 4 centigrade for up to one week.
Storage	The shelf life is related to many factors, storage state, buffer ingredients, storage temperature and the stability of the protein itself. Generally, the shelf life of liquid form is 6 months at -20 centigrade/-80 centigrade. The shelf life of lyophilized form is 12 months at -20 centigrade/-80 centigrade.
Concentration	A hardcopy of COA with reconstitution instruction is sent along with the products.

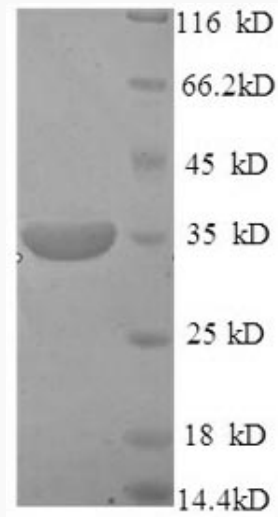
GENE INFORMATION

Gene Name	MPG N-methylpurine-DNA glycosylase [Homo sapiens]
Official Symbol	MPG
Synonyms	MPG; MDG; AAG; ADPG; APNG; Mid1; anpg; PIG11; PIG16; CRA36.1;
Gene ID	4350
mRNA Refseq	NM_001015052
Protein Refseq	NP_001015052
MIM	156565
UniProt ID	P29372

 Tel: 1-631-559-9269 1-516-512-3133

 Email: info@creative-biomart.com  Fax: 1-631-938-8127

 45-1 Ramsey Road, Shirley, NY 11967, USA



(Tris-Glycine gel) Discontinuous SDS-PAGE (reduced) with 5% enrichment gel and 15% separation gel.

Tel: 1-631-559-9269 1-516-512-3133

Email: info@creative-biomart.com Fax: 1-631-938-8127

45-1 Ramsey Road, Shirley, NY 11967, USA