

Recombinant Human N-methylpurine-DNA glycosylase Protein, His tagged

Cat. No. MPG-160H **Lot. No.** (See product label)

SPECIFICATION

Product Overview	Recombinant human MPG protein (P29372-1) (Met 18-Ala 298) with a His tag at the C-terminus was expressed in E. coli.
Species	Human
Source	E.coli
ProteinLength	18-298aa
Description	Predicted to enable alkylbase DNA N-glycosylase activity. Predicted to be involved in base-excision repair. Located in cytosol and nucleoplasm. Hydrolysis of the deoxyribose N-glycosidic bond to excise 3-methyladenine, and 7-methylguanine from the damaged DNA polymer formed by alkylation lesions.
Tag	C-His
Molecular Mass	32.5 kDa
Endotoxin	Less than 1.0 EU/μg by the LAL method.
Purity	>95% as determined by SDS-PAGE.
Storage	Please avoid repeated freeze-thaw cycles. Samples are stable for up to twelve months from date of receipt at -20 to -80 centigrade. It is recommended that aliquot

 Tel: 1-631-559-9269 1-516-512-3133

 Email: info@creative-biomart.com  Fax: 1-631-938-8127

 45-1 Ramsey Road, Shirley, NY 11967, USA

the reconstituted solution to minimize freeze-thaw cycles.

Storage Buffer

Lyophilized from a 0.2 µm filtered solution of PBS, pH7.4, 5% Trehalose, 5% mannitol.

Reconstitution

Reconstitute at 250 µg/mL in sterile water.

GENE INFORMATION

Gene Name

MPG N-methylpurine-DNA glycosylase [Homo sapiens (human)]

Official Symbol

MPG

Synonyms

MPG; N-methylpurine-DNA glycosylase; DNA-3-methyladenine glycosylase; alkyladenine DNA glycosylase; MDG; 3-alkyladenine DNA glycosylase; 3-methyladenine DNA glycosidase; proliferation-inducing protein 11; proliferation-inducing protein 16; N-methylpurine-DNA glycosylase, MPG; CRA36.1 (3-methyladenine DNA glycosylase); 3 end of the Mid1 gene, localized 68 kb upstream the humanzeta globin gene on 16p; AAG; ADPG; APNG; Mid1; anpg; PIG11; PIG16; CRA36.1;

Gene ID

4350

mRNA Refseq

NM_001015052

Protein Refseq

NP_001015052

MIM

156565

UniProt ID

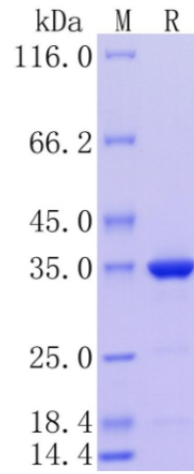
P29372

 Tel: 1-631-559-9269 1-516-512-3133

 Email: info@creative-biomart.com  Fax: 1-631-938-8127

 45-1 Ramsey Road, Shirley, NY 11967, USA

**Protein on SDS-
PAGE under
reducing (R)
condition.**



 Tel: 1-631-559-9269 1-516-512-3133

 Email: info@creative-biomart.com  Fax: 1-631-938-8127

 45-1 Ramsey Road, Shirley, NY 11967, USA