

## Recombinant Human MPHOSPH6 Protein, GST-tagged

**Cat. No.** MPHOSPH6-5499H    **Lot. No.** (See product label)

### SPECIFICATION

<b>Product Overview</b>	Human MPHOSPH6 full-length ORF ( AAH05242, 1 a.a. - 160 a.a.) recombinant protein with GST-tag at N-terminal.
<b>Species</b>	Human
<b>Source</b>	Wheat Germ
<b>Description</b>	MPHOSPH6 (M-Phase Phosphoprotein 6) is a Protein Coding gene. Among its related pathways are Deadenylation-dependent mRNA decay and rRNA processing in the nucleus and cytosol. GO annotations related to this gene include RNA binding.
<b>Molecular Mass</b>	43.34 kDa
<b>AA Sequence</b>	MAAERKTKLSKNLLRMKFMQRGLDSETKKQLEEEKKIIEEHWYLDLPELKEKESFI IEEQSFLLCEDLLYGRMSFRGFNPEVEKMLQMNAKHKAEEVEDETVELDVSDEEM ARRYETLVGTIGKKFARKRDHANYEEDENGDITPIKAKKMFLKPQD
<b>Applications</b>	Enzyme-linked Immunoabsorbent Assay Western Blot (Recombinant protein) Antibody Production Protein Array
<b>Notes</b>	Best use within three months from the date of receipt of this protein.
<b>Storage</b>	Store at -80 centigrade. Aliquot to avoid repeated freezing and thawing.

 Tel: 1-631-559-9269    1-516-512-3133

 Email: [info@creative-biomart.com](mailto:info@creative-biomart.com)     Fax: 1-631-938-8127

 45-1 Ramsey Road, Shirley, NY 11967, USA

**Storage Buffer** 50 mM Tris-HCl, 10 mM reduced Glutathione, pH=8.0 in the elution buffer.

## GENE INFORMATION

**Gene Name** MPHOSPH6 M-phase phosphoprotein 6 [ Homo sapiens ]

**Official Symbol** MPHOSPH6

**Synonyms** MPHOSPH6; M-phase phosphoprotein 6; MPP6; MPP; MPP-6;

**Gene ID** 10200

**mRNA Refseq** NM\_005792

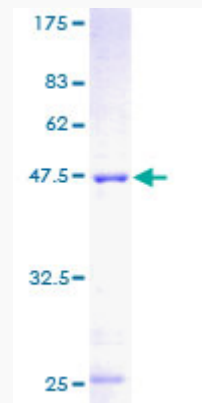
**Protein Refseq** NP\_005783

**MIM** 605500


**UniProt ID** Q99547

### Quality Control

#### Testing:



12.5% SDS-PAGE Stained with Coomassie Blue.

 Tel: 1-631-559-9269 1-516-512-3133

 Email: [info@creative-biomart.com](mailto:info@creative-biomart.com)  Fax: 1-631-938-8127

 45-1 Ramsey Road, Shirley, NY 11967, USA