

Recombinant Human MPI Protein, MYC/DDK-tagged, C13 and N15-labeled

Cat. No. MPI-162H Lot. No. (See product label)

SPECIFICATION

Product Overview	MPI MS Standard C13 and N15-labeled recombinant protein (NP_002426) with a C-terminal MYC/DDK tag, was expressed in HEK293 cells.
Species	Human
Source	HEK293
Description	Phosphomannose isomerase catalyzes the interconversion of fructose-6-phosphate and mannose-6-phosphate and plays a critical role in maintaining the supply of D-mannose derivatives, which are required for most glycosylation reactions. Mutations in the MPI gene were found in patients with carbohydrate-deficient glycoprotein syndrome, type Ib. Alternative splicing results in multiple transcript variants. [provided by RefSeq, Jan 2014]
Molecular Mass	46.7 kDa
AA Sequence	MAAPRVFPLSCAVQQYAWGKMGSNSEVARLLASSDPLAQIAEDKPYAELWMGTHP RGDAKILDNRISQKTLSQWIAENQDSLGSVKKDTFNGNLPFLFKVLSVETPLSIQAHP NKELAEKHLHLQAPQHYPDANHKPEMAIALTPFQGLCGFRPVVEIIVTFLKKVPEFQFLI GDEAATHLQKTMSSHDSQAVASSLQSCFSHLMKSEKKVVVEQLNLLVKRISQQAAAG NNMEDIFGELLQLHQQYPGDIGCFAIYFLNLLTLKPGEAMFLEANVPHAYLKGDCVE CMACSDNTVRAGLTPKFIDVPTLCEMLSYPSSSKDRLFLPTRSQEDPYLSIYDPPV PDFTIMKTEVPGSVTEYKVLALDSASILLMVQGTVIASPTTQTPIPLQRGGVLFIGN

 Tel: 1-631-559-9269 1-516-512-3133

 Email: info@creative-biomart.com  Fax: 1-631-938-8127

 45-1 Ramsey Road, Shirley, NY 11967, USA



ESVSLKLTEPKDLLIFRACCLLTRTRPLEQKLISEEDLAANDILDYKDDDDKV

Purity > 80% as determined by SDS-PAGE and Coomassie blue staining

Stability Stable for 3 months from receipt of products under proper storage and handling conditions.

Storage Store at -80 centigrade. Avoid repeated freeze-thaw cycles.

Concentration 50 µg/mL as determined by BCA

Storage Buffer 100 mM glycine, 25 mM Tris-HCl, pH 7.3.

GENE INFORMATION

Gene Name MPI mannose phosphate isomerase [Homo sapiens (human)]

Official Symbol MPI

Synonyms MPI; mannose phosphate isomerase; CDG1B; PMI; PMI1; mannose-6-phosphate isomerase; phosphohexomutase; phosphomannose isomerase 1; EC 5.3.1.8

Gene ID 4351

mRNA Refseq NM_002435

Protein Refseq NP_002426

MIM 154550

UniProt ID P34949

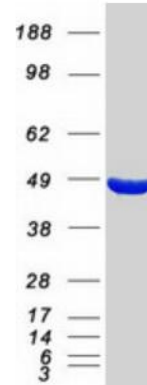
Tel: 1-631-559-9269 1-516-512-3133

Email: info@creative-biomart.com Fax: 1-631-938-8127

45-1 Ramsey Road, Shirley, NY 11967, USA



SDS-PAGE



Tel: 1-631-559-9269 1-516-512-3133

Email: info@creative-biomart.com Fax: 1-631-938-8127

45-1 Ramsey Road, Shirley, NY 11967, USA