

Recombinant Full Length Human MPI Protein, C-Flag-tagged

Cat. No. MPI-1767HFL Lot. No. (See product label)

SPECIFICATION

Product Overview Recombinant Full Length Human MPI Protein, fused to Flag-tag at C-terminus, was expressed in Mammalian cells.

Species Human

Source Mammalian Cells

Description Phosphomannose isomerase catalyzes the interconversion of fructose-6-phosphate and mannose-6-phosphate and plays a critical role in maintaining the supply of D-mannose derivatives, which are required for most glycosylation reactions. Mutations in the MPI gene were found in patients with carbohydrate-deficient glycoprotein syndrome, type Ib. Alternative splicing results in multiple transcript variants.

Form 25 mM Tris HCl, pH 7.3, 100 mM glycine, 10% glycerol.

Molecular Mass 46.5 kDa

AA Sequence

```

MAAPRVFPLSCAVQQYAWGKMGSNSEVARLLASSDPLAQIAEDKPYAELWMGTHP
RGDAKILDNRISQKT LSQWIAENQDSLGSVKVDTFNGLNLPFLFKVLSVETPLSIQHP
NKELAEKHLHLQAPQHYPDANHKPEMAI ALTPFQGLCGFRPVVEIIVTFLKKVPEFQFLI
GDEAATHLKQTMSHDSQAVASSLQSCFSLMKSEKKVVV EQLNLLVKRISQQAAA
GNNMEDIFGELLQLHQYYPGDIGCFAYFLNLLTLKPGEAMFLEANVPHAYLK GDC
VECMACSDNTVRAGLTPKFIDVPTLCEMLSYPSSSKDRLFLPTRSQEDPYLSIYDP
PVPDFTIMKT EVPGSVTEYKVLALDSASILLMVQGTVIASPTTQTPIPLQRGGVLFIG
ANESVSLKLTEPKDLLIFRAC CLL TRTRPLEQKLISEEDLAANDILDYKDDDDKV
    
```

 Tel: 1-631-559-9269 1-516-512-3133

 Email: info@creative-biomart.com  Fax: 1-631-938-8127

 45-1 Ramsey Road, Shirley, NY 11967, USA

Purity	> 80% as determined by SDS-PAGE and Coomassie blue staining.
Stability	Stable for 12 months from the date of receipt of the product under proper storage and handling conditions. Avoid repeated freeze-thaw cycles.
Storage	Store at -80 centigrade.
Concentration	>50 ug/mL as determined by microplate BCA method.
Preparation	Recombinant protein was captured through anti-DDK affinity column followed by conventional chromatography steps.
Protein Families	ES Cell Differentiation/IPS
Protein Pathways	Amino sugar and nucleotide sugar metabolism, Fructose and mannose metabolism, Metabolic pathways
Full Length	Full L.

GENE INFORMATION

Gene Name	MPI mannose phosphate isomerase [Homo sapiens (human)]
Official Symbol	MPI
Synonyms	PMI; PMI1; CDG1B
Gene ID	4351
mRNA Refseq	NM_002435.3

 Tel: 1-631-559-9269 1-516-512-3133

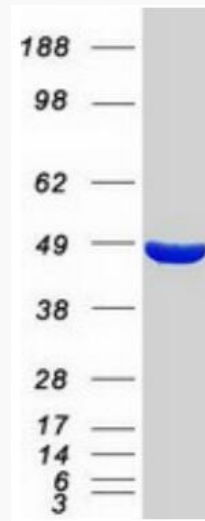
 Email: info@creative-biomart.com  Fax: 1-631-938-8127

 45-1 Ramsey Road, Shirley, NY 11967, USA

Protein Refseq NP_002426.1

MIM 154550

UniProt ID P34949



Coomassie blue staining of purified MPI protein.

 Tel: 1-631-559-9269 1-516-512-3133

 Email: info@creative-biomart.com  Fax: 1-631-938-8127

 45-1 Ramsey Road, Shirley, NY 11967, USA