

Recombinant Human MPI Protein (Ala2-Leu423), N-His tagged

Cat. No. MPI-4591H Lot. No. (See product label)

SPECIFICATION

Product Overview	Recombinant human MPI (Ala2-Leu423) fused with the N-His tag was expressed in E. coli.
Species	Human
Source	E.coli
ProteinLength	Ala2-Leu423
Form	Lyophilized powder/frozen liquid
Molecular Mass	48.83 kDa
Purity	>90% as determined by SDS-PAGE.
Notes	For research use only.
Storage	Use a manual defrost freezer and avoid repeated freeze thaw cycles. Store at 2 to 8 centigrade for one week. Store at -20 to -80 centigrade for twelve months from the date of receipt.
Storage Buffer	0.01M PBS, pH 7.4, 0.02% NLS
Reconstitution	Reconstitute in sterile water for a stock solution.

 Tel: 1-631-559-9269 1-516-512-3133

 Email: info@creative-biomart.com  Fax: 1-631-938-8127

 45-1 Ramsey Road, Shirley, NY 11967, USA

Shipping

They are shipped out with dry ice/blue ice unless customers require otherwise.

GENE INFORMATION
Gene Name

MPI mannose phosphate isomerase [Homo sapiens (human)]

Official Symbol

MPI

Synonyms

MPI; mannose phosphate isomerase; mannose-6-phosphate isomerase; mannose 6 phosphate isomerase; phosphohexamutase; phosphomannose isomerase 1; mannose-6- phosphate isomerase; PMI; PMI1; CDG1B; FLJ39201;

Gene ID

4351

mRNA Refseq

NM_002435

Protein Refseq

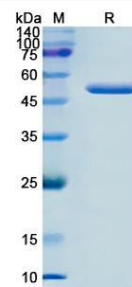
NP_002426

MIM

154550

UniProt ID

P34949

SDS-PAGE


 Tel: 1-631-559-9269 1-516-512-3133

 Email: info@creative-biomart.com  Fax: 1-631-938-8127

 45-1 Ramsey Road, Shirley, NY 11967, USA