

## Recombinant Human MPI Protein, GST-tagged

Cat. No. MPI-5503H Lot. No. (See product label)

### SPECIFICATION

<b>Product Overview</b>	Human MPI full-length ORF ( NP_002426.1, 1 a.a. - 423 a.a.) recombinant protein with GST-tag at N-terminal.
<b>Species</b>	Human
<b>Source</b>	Wheat Germ
<b>Description</b>	Phosphomannose isomerase catalyzes the interconversion of fructose-6-phosphate and mannose-6-phosphate and plays a critical role in maintaining the supply of D-mannose derivatives, which are required for most glycosylation reactions. Mutations in the MPI gene were found in patients with carbohydrate-deficient glycoprotein syndrome, type Ib. [provided by RefSeq]
<b>Molecular Mass</b>	73.1 kDa
<b>AA Sequence</b>	<p>MAAPRVFPLSCAVQQYAWGKMGSNSEVARLLASSDPLAQIAEDKPYAELWMGTHP            RGDAKILDNRISQKTLSQWIAENQDSLGSVKKDTFNGNLPFLFKVLSVETPLSIQAHP            NKELAEKHLHLQAPQHYPDANHKPEMAIALTPFQGLCGFRPVVEEIVTFLKKVPEFQFLI            GDEAATHLKQTMSHDSQAVASSLQSCFSHLMKSEKKVVVEQLNLLVKRISQQAAAG            NNMEDIFGELLQLHQQYPGDIGCFAIYFLNLLTLKPGEAMFLEANVPHAYLKGDCVE            CMACSDNTVRAGLTPKFIDVPTLCEMLSYPSSSKDRLFLPTRSQEDPYLSIYDPPV            PDFTIMKTEVPGSVTEYKVLALDSASILLMVQGTVIASPTTQTPIPLQRGGVLFIGAN            ESVSLKLTEPKDLLIFRACCLL</p>
<b>Applications</b>	Enzyme-linked Immunoabsorbent Assay

 Tel: 1-631-559-9269 1-516-512-3133

 Email: [info@creative-biomart.com](mailto:info@creative-biomart.com)  Fax: 1-631-938-8127

 45-1 Ramsey Road, Shirley, NY 11967, USA

Western Blot (Recombinant protein)  
 Antibody Production  
 Protein Array

<b>Notes</b>	Best use within three months from the date of receipt of this protein.
<b>Storage</b>	Store at -80 centigrade. Aliquot to avoid repeated freezing and thawing.
<b>Storage Buffer</b>	50 mM Tris-HCl, 10 mM reduced Glutathione, pH=8.0 in the elution buffer.

## GENE INFORMATION

<b>Gene Name</b>	MPI mannose phosphate isomerase [ Homo sapiens ]
<b>Official Symbol</b>	MPI
<b>Synonyms</b>	MPI; mannose phosphate isomerase; mannose-6-phosphate isomerase; mannose 6 phosphate isomerase; phosphohexomutase; phosphomannose isomerase 1; mannose-6- phosphate isomerase; PMI; PMI1; CDG1B; FLJ39201;
<b>Gene ID</b>	4351
<b>mRNA Refseq</b>	NM_002435
<b>Protein Refseq</b>	NP_002426
<b>MIM</b>	154550
<b>UniProt ID</b>	P34949

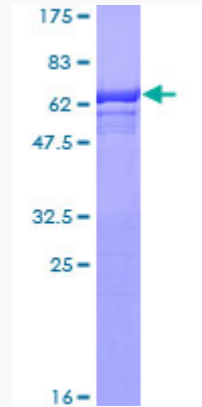
 Tel: 1-631-559-9269 1-516-512-3133

 Email: [info@creative-biomart.com](mailto:info@creative-biomart.com)  Fax: 1-631-938-8127

 45-1 Ramsey Road, Shirley, NY 11967, USA

**Quality Control**

**Testing:**



12.5% SDS-PAGE Stained with Coomassie Blue.

 Tel: 1-631-559-9269 1-516-512-3133

 Email: [info@creative-biomart.com](mailto:info@creative-biomart.com)  Fax: 1-631-938-8127

 45-1 Ramsey Road, Shirley, NY 11967, USA