

Recombinant Cattle MPO Protein, His&GST-tagged

Cat. No. MPO-1133C Lot. No. (See product label)

SPECIFICATION

Product Overview	Recombinant Cattle MPO Protein (Val139-Gly252) with His&GST tag was expressed in E. coli.
Species	Cattle
Source	E.coli
ProteinLength	Val139-Gly252
Description	Myeloperoxidase (MPO) is a heme protein synthesized during myeloid differentiation that constitutes the major component of neutrophil azurophilic granules. Produced as a single chain precursor, myeloperoxidase is subsequently cleaved into a light and heavy chain. The mature myeloperoxidase is a tetramer composed of 2 light chains and 2 heavy chains. This enzyme produces hypohalous acids central to the microbicidal activity of neutrophils.
Form	Freeze-dried powder
Molecular Mass	Predicted Molecular Mass: 43 kDa; Accurate Molecular Mass: 45 kDa
Purity	> 90%
Applications	Positive Control; Immunogen; SDS-PAGE; WB.
Stability	The thermal stability is described by the loss rate. The loss rate was determined by

 Tel: 1-631-559-9269 1-516-512-3133

 Email: info@creative-biomart.com  Fax: 1-631-938-8127

 45-1 Ramsey Road, Shirley, NY 11967, USA

accelerated thermal degradation test, that is, incubate the protein at 37 centigrade for 48h, and no obvious degradation and precipitation were observed. The loss rate is less than 5% within the expiration date under appropriate storage condition.

Storage

Avoid repeated freeze/thaw cycles. Store at 2-8 centigrade for one month. Aliquot and store at -80 centigrade for 12 months.

Storage Buffer

PBS, pH7.4, containing 0.01% SKL, 1mM DTT, 5% Trehalose and Proclin300.

Reconstitution

Reconstitute in 20mM Tris, 150mM NaCl (pH8.0) to a concentration of 0.1-1.0 mg/mL. Do not vortex.

GENE INFORMATION

Gene Name

MPO myeloperoxidase [*Bos taurus* (cattle)]

Official Symbol

MPO

Synonyms

MPO; myeloperoxidase; myeloperoxidase; EC 1.11.1.7

Gene ID

511206

mRNA Refseq

NM_001113298

Protein Refseq

NP_001106769

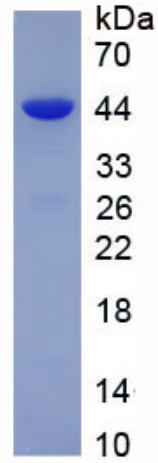
UniProt ID

A6QPT4

 Tel: 1-631-559-9269 1-516-512-3133

 Email: info@creative-biomart.com  Fax: 1-631-938-8127

 45-1 Ramsey Road, Shirley, NY 11967, USA



 Tel: 1-631-559-9269 1-516-512-3133

 Email: info@creative-biomart.com  Fax: 1-631-938-8127

 45-1 Ramsey Road, Shirley, NY 11967, USA