

Recombinant Human MPO Protein, GST-tagged

Cat. No. MPO-5506H Lot. No. (See product label)

SPECIFICATION

Product Overview	Human MPO partial ORF (NP_000241, 646 a.a. - 745 a.a.) recombinant protein with GST-tag at N-terminal.
Species	Human
Source	Wheat Germ
Description	Myeloperoxidase (MPO) is a heme protein synthesized during myeloid differentiation that constitutes the major component of neutrophil azurophilic granules. Produced as a single chain precursor, myeloperoxidase is subsequently cleaved into a light and heavy chain. The mature myeloperoxidase is a tetramer composed of 2 light chains and 2 heavy chains. This enzyme produces hypohalous acids central to the microbicidal activity of neutrophils. [provided by RefSeq]
Molecular Mass	36.74 kDa
AA Sequence	GVSEPLKRKGRVGPLLACIIGTQFRKLRDGRFWWENEGVFSMQQRQALAQISLPR IICDNTGITTVSKNNIFMSNSYPRDFVNCSTLPALNLSWREAS
Applications	Enzyme-linked Immunoabsorbent Assay Western Blot (Recombinant protein) Antibody Production Protein Array
Notes	Best use within three months from the date of receipt of this protein.

 Tel: 1-631-559-9269 1-516-512-3133

 Email: info@creative-biomart.com  Fax: 1-631-938-8127

 45-1 Ramsey Road, Shirley, NY 11967, USA

Storage Store at -80 centigrade. Aliquot to avoid repeated freezing and thawing.

Storage Buffer 50 mM Tris-HCl, 10 mM reduced Glutathione, pH=8.0 in the elution buffer.

GENE INFORMATION

Gene Name MPO myeloperoxidase [Homo sapiens]

Official Symbol MPO

Synonyms MPO; myeloperoxidase;

Gene ID 4353

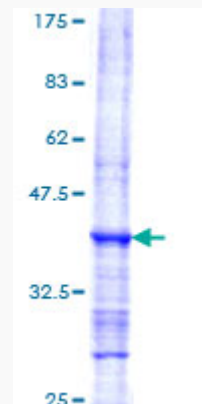
mRNA Refseq NM_000250

Protein Refseq NP_000241

MIM 606989

UniProt ID P05164

Quality Control Testing:



 Tel: 1-631-559-9269 1-516-512-3133

 Email: info@creative-biomart.com  Fax: 1-631-938-8127

 45-1 Ramsey Road, Shirley, NY 11967, USA



12.5% SDS-PAGE Stained with Coomassie Blue.

 Tel: 1-631-559-9269 1-516-512-3133

 Email: info@creative-biomart.com  Fax: 1-631-938-8127

 45-1 Ramsey Road, Shirley, NY 11967, USA