

Recombinant Human MPPE1 Protein, GST-tagged

Cat. No. MPPE1-5517H **Lot. No.** (See product label)

SPECIFICATION

Product Overview	Human MPPE1 full-length ORF (AAH02877.1, 34 a.a. - 333 a.a.) recombinant protein with GST-tag at N-terminal.
Species	Human
Source	Wheat Germ
Description	MPPE1 (Metallophosphoesterase 1) is a Protein Coding gene. GO annotations related to this gene include hydrolase activity and phosphoric diester hydrolase activity.
Molecular Mass	58.74 kDa
AA Sequence	LLFCEFLIYYLAIFQCNWPEVKTTASDGEQTTREPVLKAMFLADTHLLGEFLGHWLDK LRREWQMERAFQTALWLLQPEVVFILGDIFDEGKWSTPEAWADDVERFQKMFRHP SHVQLKVVAGNHDIGFHYEMNTYKVERFEKVFSSERLFSWKGINFVMVNSVALNGD GCGICSETEAELIEVSHRLNCSRELLWWLQPRLVLSGHTHSACEVHHGGRVPELSV PSFSWRNRNPNPSFIMGSITPTDYTLKCYLPREDVLLIYCGVVGFLVVLTLTHFGLLA SPFLSGLNLLGKRKTR
Applications	Enzyme-linked Immunoabsorbent Assay Western Blot (Recombinant protein) Antibody Production Protein Array

 Tel: 1-631-559-9269 1-516-512-3133

 Email: info@creative-biomart.com  Fax: 1-631-938-8127

 45-1 Ramsey Road, Shirley, NY 11967, USA

Notes	Best use within three months from the date of receipt of this protein.
Storage	Store at -80 centigrade. Aliquot to avoid repeated freezing and thawing.
Storage Buffer	50 mM Tris-HCl, 10 mM reduced Glutathione, pH=8.0 in the elution buffer.

GENE INFORMATION

Gene Name	MPPE1 metallophosphoesterase 1 [Homo sapiens]
Official Symbol	MPPE1
Synonyms	MPPE1; metallophosphoesterase 1; metallo phosphoesterase; post-GPI attachment to proteins factor 5; PGAP5;
Gene ID	65258
mRNA Refseq	NM_001242904
Protein Refseq	NP_001229833
MIM	611900
UniProt ID	Q53F39

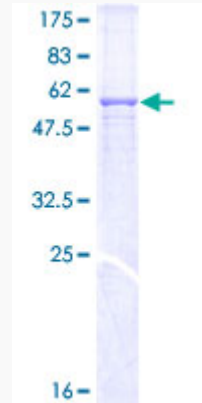
 Tel: 1-631-559-9269 1-516-512-3133

 Email: info@creative-biomart.com  Fax: 1-631-938-8127

 45-1 Ramsey Road, Shirley, NY 11967, USA

Quality Control

Testing:



12.5% SDS-PAGE Stained with Coomassie Blue.

 Tel: 1-631-559-9269 1-516-512-3133

 Email: info@creative-biomart.com  Fax: 1-631-938-8127

 45-1 Ramsey Road, Shirley, NY 11967, USA