

Recombinant Human MPZL1 Protein (Ser36-Val162), C-His tagged

Cat. No. MPZL1-5271H Lot. No. (See product label)

SPECIFICATION

Product Overview	Recombinant human MPZL1 (Ser36-Val162) fused with the C-terminal His tag was expressed in Mammalian cells.
Species	Human
Source	Mammalian Cells
ProteinLength	Ser36-Val162
Form	Lyophilized powder/frozen liquid
Molecular Mass	13.97 kDa
Purity	>90% as determined by SDS-PAGE.
Notes	For research use only.
Storage	Use a manual defrost freezer and avoid repeated freeze thaw cycles. Store at 2 to 8 centigrade for one week. Store at -20 to -80 centigrade for twelve months from the date of receipt.
Storage Buffer	Supplied as solution form in PBS or lyophilized from PBS.
Reconstitution	Reconstitute in sterile water for a stock solution.

 Tel: 1-631-559-9269 1-516-512-3133

 Email: info@creative-biomart.com  Fax: 1-631-938-8127

 45-1 Ramsey Road, Shirley, NY 11967, USA

Shipping

They are shipped out with dry ice/blue ice unless customers require otherwise.

GENE INFORMATION**Gene Name**

MPZL1 myelin protein zero-like 1 [Homo sapiens (human)]

Official Symbol

MPZL1

Synonyms

MPZL1; myelin protein zero-like 1; myelin protein zero-like protein 1; FLJ21047; PZR; protein zero related; protein zero-related; immunoglobulin family transmembrane protein; PZRa; PZRb; PZR1b; MPZL1b;

Gene ID

9019

mRNA Refseq

NM_001146191

Protein Refseq

NP_001139663

MIM

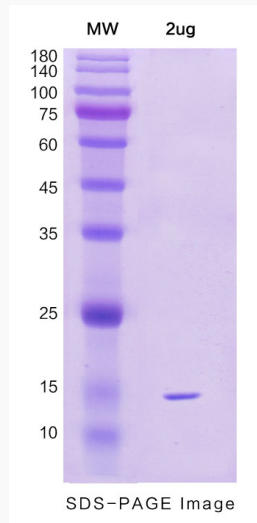
604376

UniProt ID

O95297

 Tel: 1-631-559-9269 1-516-512-3133 Email: info@creative-biomart.com  Fax: 1-631-938-8127 45-1 Ramsey Road, Shirley, NY 11967, USA

SDS-PAGE



 Tel: 1-631-559-9269 1-516-512-3133

 Email: info@creative-biomart.com  Fax: 1-631-938-8127

 45-1 Ramsey Road, Shirley, NY 11967, USA