

## Recombinant Human MPZL1 Protein, GST-tagged

Cat. No. MPZL1-5525H Lot. No. (See product label)

### SPECIFICATION

<b>Product Overview</b>	Human MPZL1 full-length ORF ( AAH07881, 1 a.a. - 269 a.a.) recombinant protein with GST-tag at N-terminal.
<b>Species</b>	Human
<b>Source</b>	Wheat Germ
<b>Description</b>	MPZL1 (Myelin Protein Zero Like 1) is a Protein Coding gene. Diseases associated with MPZL1 include Noonan Syndrome 1. Among its related pathways are Cell adhesion molecules (CAMs) and Tyrosine Kinases / Adaptors. GO annotations related to this gene include structural molecule activity. An important paralog of this gene is MPZ.
<b>Molecular Mass</b>	55.33 kDa
<b>AA Sequence</b>	MAASAGAGAVIAAPDSRRWLWSVLAALGLLTAGVSALEVYTPKEIFVANGTQGKLT CKFKSTSTTGGLTSVSWSFQPEGADTTVSFFHYSQGQVYLGNYPPFKDRISWAGDL DKKDASINIENMQFIHNGTYICDVKNPPDIVVQPGHIRLYVVEKENLPVFPVWVVVIV TAVVLGLTLLISMILAVLYRRKNSKRDTYGCSTSESLSPVKQAPRKSPSDTEGLVKSL PSGSHQGPVIYAQLDHSGGHSDKINKSESVYADIRKN
<b>Applications</b>	Enzyme-linked Immunoabsorbent Assay Western Blot (Recombinant protein) Antibody Production Protein Array

 Tel: 1-631-559-9269 1-516-512-3133

 Email: [info@creative-biomart.com](mailto:info@creative-biomart.com)  Fax: 1-631-938-8127

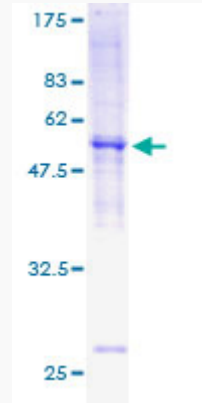
 45-1 Ramsey Road, Shirley, NY 11967, USA

<b>Notes</b>	Best use within three months from the date of receipt of this protein.
<b>Storage</b>	Store at -80 centigrade. Aliquot to avoid repeated freezing and thawing.
<b>Storage Buffer</b>	50 mM Tris-HCl, 10 mM reduced Glutathione, pH=8.0 in the elution buffer.
<b>GENE INFORMATION</b>	
<b>Gene Name</b>	MPZL1 myelin protein zero-like 1 [ Homo sapiens ]
<b>Official Symbol</b>	MPZL1
<b>Synonyms</b>	MPZL1; myelin protein zero-like 1; myelin protein zero-like protein 1; FLJ21047; PZR; protein zero related; protein zero-related; immunoglobulin family transmembrane protein; PZRa; PZRb; PZR1b; MPZL1b;
<b>Gene ID</b>	9019
<b>mRNA Refseq</b>	NM_001146191
<b>Protein Refseq</b>	NP_001139663
<b>MIM</b>	604376
<b>UniProt ID</b>	O95297

 Tel: 1-631-559-9269 1-516-512-3133

 Email: [info@creative-biomart.com](mailto:info@creative-biomart.com)  Fax: 1-631-938-8127

 45-1 Ramsey Road, Shirley, NY 11967, USA



**Quality Control**

**Testing:**

12.5% SDS-PAGE Stained with Coomassie Blue.

 Tel: 1-631-559-9269 1-516-512-3133

 Email: [info@creative-biomart.com](mailto:info@creative-biomart.com)  Fax: 1-631-938-8127

 45-1 Ramsey Road, Shirley, NY 11967, USA