

Recombinant Human MR1 Protein, Myc/DDK-tagged

Cat. No. MR1-01H Lot. No. (See product label)

SPECIFICATION

| | |
|-------------------------|--|
| Product Overview | Recombinant protein of human major histocompatibility complex, class I-related (MR1) with a C-Myc/DDK tag was expressed in HEK293T. |
| Species | Human |
| Source | HEK293 |
| Description | MAIT (mucosal-associated invariant T-cells) lymphocytes represent a small population of T-cells primarily found in the gut. The protein encoded by this gene is an antigen-presenting molecule that presents metabolites of microbial vitamin B to MAITs. This presentation may activate the MAITs to regulate the amounts of specific types of bacteria in the gut. Several transcript variants encoding different isoforms have been found for this gene, and a pseudogene of it has been detected about 36 kbp upstream on the same chromosome. |
| Molecular Mass | 39.2 kDa |
| Purity | > 80% as determined by SDS-PAGE and Coomassie blue staining |
| Stability | Stable for 12 months from the date of receipt of the product under proper storage and handling conditions. Avoid repeated freeze-thaw cycles. |
| Storage | Store at -80 centigrade. |
| Concentration | >50 µg/mL as determined by microplate BCA method |

 Tel: 1-631-559-9269 1-516-512-3133

 Email: info@creative-biomart.com  Fax: 1-631-938-8127

 45-1 Ramsey Road, Shirley, NY 11967, USA

Storage Buffer 25 mM Tris.HCl, pH 7.3, 100 mM glycine, 10% glycerol

GENE INFORMATION

Gene Name MR1 major histocompatibility complex, class I-related [Homo sapiens (human)]

Official Symbol MR1

Synonyms MR1; major histocompatibility complex, class I-related; HLALS; major histocompatibility complex class I-related gene protein; MHC class I-like antigen MR-1; MHC class-I related-gene protein; major histocompatibility complex, class I-like sequence

Gene ID 3140

mRNA Refseq NM_001531

Protein Refseq NP_001522

MIM 600764

UniProt ID Q95460

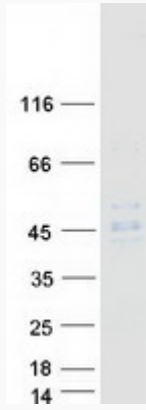
 Tel: 1-631-559-9269 1-516-512-3133

 Email: info@creative-biomart.com  Fax: 1-631-938-8127

 45-1 Ramsey Road, Shirley, NY 11967, USA



SDS-PAGE



Tel: 1-631-559-9269 1-516-512-3133

Email: info@creative-biomart.com Fax: 1-631-938-8127

45-1 Ramsey Road, Shirley, NY 11967, USA