

# Recombinant Human MR1 Protein, Myc/DDK-tagged, C13 and N15-labeled

**Cat. No.** MR1-4423H    **Lot. No.** (See product label)

## SPECIFICATION

<b>Product Overview</b>	MR1 MS Standard C13 and N15-labeled recombinant protein (NP_001522) with a C-terminal MYC/DDK tag, was expressed in HEK293 cells.
<b>Species</b>	Human
<b>Source</b>	HEK293
<b>Description</b>	MAIT (mucosal-associated invariant T-cells) lymphocytes represent a small population of T-cells primarily found in the gut. The protein encoded by this gene is an antigen-presenting molecule that presents metabolites of microbial vitamin B to MAITs. This presentation may activate the MAITs to regulate the amounts of specific types of bacteria in the gut. Several transcript variants encoding different isoforms have been found for this gene, and a pseudogene of it has been detected about 36 kbp upstream on the same chromosome.
<b>Molecular Mass</b>	39.2 kDa
<b>AA Sequence</b>	<p>MGELMAFLLPLIIVLMVKHSDSRTHSLRYFRLGVSDPIRGVPEFISVGYVDSHPITTYD  SVTRQKEPRAPWMAENLAPDHWERYTQLLRGWQQMFKVELKRLQRHYNHSGSHT  YQRMIGCELLEDGSTTGFLQYAYDGGQDFLIFNKDTLSWLAVDNVAHTIKQAWEANQ  HELLYQKNWLEEECIAWLKRFLEYGKDTLQRTEPPLVRVNRKETFFPGVTALFCKAH  GFYPPEIYMTWMKNGEEIVQEIDYGDILPSGDGTYQAWASIELDPQSSNLYSCHVEH  CGVHMLVLPQSESETIPLVMKAVSGSIVLVIVLAGVGVLVWRRRPREQNGAIYLP</p>

 Tel: 1-631-559-9269    1-516-512-3133

 Email: [info@creative-biomart.com](mailto:info@creative-biomart.com)     Fax: 1-631-938-8127

 45-1 Ramsey Road, Shirley, NY 11967, USA



DRTRTRPLEQKLISEEDLAANDILDYKDDDDKV

**Purity** > 80% as determined by SDS-PAGE and Coomassie blue staining

**Stability** Stable for 3 months from receipt of products under proper storage and handling conditions.

**Storage** Store at -80 centigrade. Avoid repeated freeze-thaw cycles.

**Concentration** 50 µg/mL as determined by BCA

**Storage Buffer** 100 mM glycine, 25 mM Tris-HCl, pH 7.3.

## GENE INFORMATION

**Gene Name** [MR1 major histocompatibility complex, class I-related \[ Homo sapiens \(human\) \]](#)

**Official Symbol** [MR1](#)

**Synonyms** MR1; major histocompatibility complex, class I-related; HLALS, major histocompatibility complex, class I like sequence; major histocompatibility complex class I-related gene protein; MHC class I-like antigen MR-1; MHC class I-related gene protein; MHC class-I related-gene protein; class I histocompatibility antigen-like protein; major histocompatibility complex, class I-like sequence; HLALS; FLJ31593;

**Gene ID** [3140](#)

**mRNA Refseq** [NM\\_001531](#)

**Protein Refseq** [NP\\_001522](#)

Tel: 1-631-559-9269 1-516-512-3133

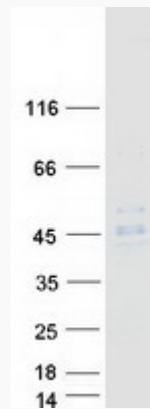
Email: [info@creative-biomart.com](mailto:info@creative-biomart.com) Fax: 1-631-938-8127

45-1 Ramsey Road, Shirley, NY 11967, USA

**MIM** 600764

**UniProt ID** Q95460

**SDS-PAGE**



 Tel: 1-631-559-9269 1-516-512-3133

 Email: [info@creative-biomart.com](mailto:info@creative-biomart.com)  Fax: 1-631-938-8127

 45-1 Ramsey Road, Shirley, NY 11967, USA