

Recombinant Human MR1 Protein, GST-tagged

Cat. No. MR1-5529H **Lot. No.** (See product label)

SPECIFICATION

Product Overview	Human MR1 partial ORF (NP_001522, 201 a.a. - 300 a.a.) recombinant protein with GST-tag at N-terminal.
Species	Human
Source	Wheat Germ
Description	MAIT (mucosal-associated invariant T-cells) lymphocytes represent a small population of T-cells primarily found in the gut. The protein encoded by this gene is an antigen-presenting molecule that presents metabolites of microbial vitamin B to MAITs. This presentation may activate the MAITs to regulate the amounts of specific types of bacteria in the gut. Several transcript variants encoding different isoforms have been found for this gene, and a pseudogene of it has been detected about 36 kbp upstream on the same chromosome. [provided by RefSeq, Jul 2015]
Molecular Mass	36.74 kDa
AA Sequence	TEPPLVRVNRKETFPGVTFCKAHGFYPPEIYMTWMKNGEEIVQEIDYGDILPSGD GTYQAWASIELDPQSSNLYSCHVEHCGVHMVLQVPQESETIPL
Applications	Enzyme-linked Immunoabsorbent Assay Western Blot (Recombinant protein) Antibody Production Protein Array

 Tel: 1-631-559-9269 1-516-512-3133

 Email: info@creative-biomart.com  Fax: 1-631-938-8127

 45-1 Ramsey Road, Shirley, NY 11967, USA

Notes	Best use within three months from the date of receipt of this protein.
Storage	Store at -80 centigrade. Aliquot to avoid repeated freezing and thawing.
Storage Buffer	50 mM Tris-HCl, 10 mM reduced Glutathione, pH=8.0 in the elution buffer.
GENE INFORMATION	
Gene Name	MR1 major histocompatibility complex, class I-related [Homo sapiens]
Official Symbol	MR1
Synonyms	MR1; major histocompatibility complex, class I-related; HLALS, major histocompatibility complex, class I like sequence; major histocompatibility complex class I-related gene protein; MHC class I-like antigen MR-1; MHC class I-related gene protein; MHC class-I related-gene protein; class I histocompatibility antigen-like protein; major histocompatibility complex, class I-like sequence; HLALS; FLJ31593;
Gene ID	3140
mRNA Refseq	NM_001194999
Protein Refseq	NP_001181928
MIM	600764
UniProt ID	Q95460

 Tel: 1-631-559-9269 1-516-512-3133

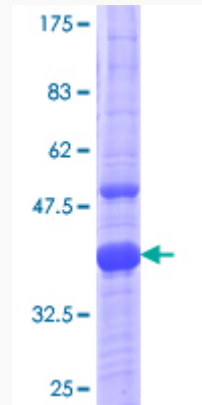
 Email: info@creative-biomart.com  Fax: 1-631-938-8127

 45-1 Ramsey Road, Shirley, NY 11967, USA



Quality Control

Testing:



12.5% SDS-PAGE Stained with Coomassie Blue.

Tel: 1-631-559-9269 1-516-512-3133

Email: info@creative-biomart.com Fax: 1-631-938-8127

45-1 Ramsey Road, Shirley, NY 11967, USA