

Recombinant Full Length Human MR1 Protein, C-Flag-tagged

Cat. No. MR1-609HFL Lot. No. (See product label)

SPECIFICATION

Product Overview	Recombinant Full Length Human MR1 Protein, fused to Flag-tag at C-terminus, was expressed in Mammalian cells.
Species	Human
Source	Mammalian Cells
Description	MAIT (mucosal-associated invariant T-cells) lymphocytes represent a small population of T-cells primarily found in the gut. The protein encoded by this gene is an antigen-presenting molecule that presents metabolites of microbial vitamin B to MAITs. This presentation may activate the MAITs to regulate the amounts of specific types of bacteria in the gut. Several transcript variants encoding different isoforms have been found for this gene, and a pseudogene of it has been detected about 36 kbp upstream on the same chromosome.
Form	25 mM Tris HCl, pH 7.3, 100 mM glycine, 10% glycerol.
Molecular Mass	39.2 kDa
AA Sequence	MGELMAFLLPLIIVLMVKHSDSRTHSLRYFRLGVSDPIRGVPEFISVGYVDSHPITTYD SVTRQKEPRAP WMAENLAPDHWERYTQLLRGWQQMFKVELKRLQRHYNHSGSH TYQRMIGCELLEDGSTTGFLQYAYDGQD FLIFNKDTLSWLAVDNVAHTIKQAWEAN QHELLYQKNWLEEECIAWLKRFLEYGKDTLQRTEPPLVRVNR KETFPGVTFALFCKA HGFYPPEIYMTWMKNGEEIVQEIDYGDILPSGDGTYQAWASIELDPQSSNLYSCHV EHCGVHMLVQVPQESETIPLVMKAVSGSIVLVIVLAGVGVLVWRRRPREQNGAIYLP

 Tel: 1-631-559-9269 1-516-512-3133

 Email: info@creative-biomart.com  Fax: 1-631-938-8127

 45-1 Ramsey Road, Shirley, NY 11967, USA

TPDRTRTRPLEQKLISEEDLAANDILDYKDDDDKV

Purity > 80% as determined by SDS-PAGE and Coomassie blue staining.

Stability Stable for 12 months from the date of receipt of the product under proper storage and handling conditions. Avoid repeated freeze-thaw cycles.

Storage Store at -80 centigrade.

Concentration >50 ug/mL as determined by microplate BCA method.

Preparation Recombinant protein was captured through anti-DDK affinity column followed by conventional chromatography steps.

Protein Families Transmembrane

Full Length Full L.

GENE INFORMATION

Gene Name [MR1 major histocompatibility complex, class I-related \[Homo sapiens \(human\) \]](#)

Official Symbol [MR1](#)

Synonyms HLALS

Gene ID [3140](#)

mRNA Refseq [NM_001531.3](#)

Protein Refseq [NP_001522.1](#)

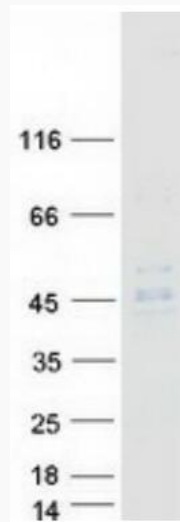
 Tel: 1-631-559-9269 1-516-512-3133

 Email: info@creative-biomart.com  Fax: 1-631-938-8127

 45-1 Ramsey Road, Shirley, NY 11967, USA

MIM 600764

UniProt ID Q95460



Coomassie blue staining of purified MR1 protein.

 Tel: 1-631-559-9269 1-516-512-3133

 Email: info@creative-biomart.com  Fax: 1-631-938-8127

 45-1 Ramsey Road, Shirley, NY 11967, USA