

Recombinant Human MRC1 Protein, His-tagged

Cat. No. MRC1-2454H Lot. No. (See product label)

SPECIFICATION

Product Overview	Recombinant Human MRC1 Protein (Pro644-Pro787) with a N-His tag was expressed in E. coli.
Species	Human
Source	E.coli
ProteinLength	Pro644-Pro787
Description	The recognition of complex carbohydrate structures on glycoproteins is an important part of several biological processes, including cell-cell recognition, serum glycoprotein turnover, and neutralization of pathogens. The protein encoded by this gene is a type I membrane receptor that mediates the endocytosis of glycoproteins by macrophages. The protein has been shown to bind high-mannose structures on the surface of potentially pathogenic viruses, bacteria, and fungi so that they can be neutralized by phagocytic engulfment.
Form	Freeze-dried powder
Molecular Mass	Predicted Molecular Mass: 20.2 kDa Accurate Molecular Mass: 20 kDa
Endotoxin	<1.0 EU per 1g (determined by the LAL method).
Purity	> 90%

 Tel: 1-631-559-9269 1-516-512-3133

 Email: info@creative-biomart.com  Fax: 1-631-938-8127

 45-1 Ramsey Road, Shirley, NY 11967, USA

Applications	Positive Control; Immunogen; SDS-PAGE; WB.
Stability	The thermal stability is described by the loss rate. The loss rate was determined by accelerated thermal degradation test, that is, incubate the protein at 37 centigrade for 48h, and no obvious degradation and precipitation were observed. The loss rate is less than 5% within the expiration date under appropriate storage condition.
Storage	Avoid repeated freeze/thaw cycles. Store at 2-8 centigrade for one month. Aliquot and store at -80 centigrade for 12 months.
Storage Buffer	20mM Tris, 150mM NaCl, pH8.0, containing 1mM EDTA, 1mM DTT, 0.01% SKL, 5% Trehalose and Proclin300.
Reconstitution	Reconstitute in 10mM PBS (pH7.4) to a concentration of 0.1-1.0 mg/mL. Do not vortex.

GENE INFORMATION

Gene Name	MRC1 mannose receptor, C type 1 [Homo sapiens (human)]
Official Symbol	MRC1
Synonyms	MRC1; mannose receptor, C type 1; mannose receptor, C type 1 like 1, MRC1L1; macrophage mannose receptor 1; bA541119.1; CD206; CLEC13D; CLEC13DL; mannose receptor, C type 1-like 1; C-type lectin domain family 13 member D; macrophage mannose receptor 1-like protein 1; MMR; MRC1L1; MGC181940;
Gene ID	4360
mRNA Refseq	NM_002438

 Tel: 1-631-559-9269 1-516-512-3133

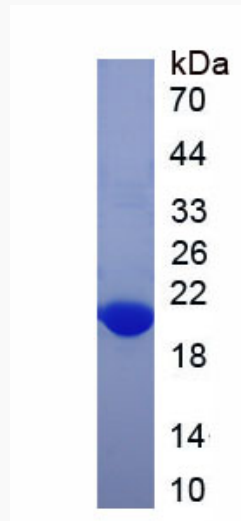
 Email: info@creative-biomart.com  Fax: 1-631-938-8127

 45-1 Ramsey Road, Shirley, NY 11967, USA

Protein Refseq NP_002429

MIM 153618

UniProt ID P22897



 Tel: 1-631-559-9269 1-516-512-3133

 Email: info@creative-biomart.com  Fax: 1-631-938-8127

 45-1 Ramsey Road, Shirley, NY 11967, USA