

## Recombinant Human MRC1 protein, His-tagged

Cat. No. MRC1-30H Lot. No. (See product label)

### SPECIFICATION

<b>Product Overview</b>	Recombinant Human MRC1 protein()(Leu19-Ala1389) was fused to His-tagged and expressed in HEK293
<b>Species</b>	Human
<b>Source</b>	HEK293
<b>ProteinLength</b>	Leu19-Ala1389
<b>Description</b>	Mrc1 is a conserved checkpoint mediator protein that transduces the replication stress signal to the downstream effector kinase. Mrc1 and its vertebrate homologue Claspin serve as a mediator for replication stress checkpoint signaling, receiving the signal from Mec1/Rad3/ATR sensor kinase and transmitting it to the effector Rad53/Cds1/Chk1 kinase. The loss of mrc1 checkpoint activity results in the aberrant activation of late/dormant origins in the presence of hydroxyurea. Tumor-associated macrophages (TAMs) expressing the multi-ligand endocytic receptor mannose receptor (CD206/MRC1) contribute to tumor immunosuppression, angiogenesis, metastasis, and relapse.
<b>Form</b>	Lyophilized from 0.22 µm filtered solution in PBS, pH7.4. Normally trehalose is added as protectant before lyophilization.
<b>Molecular Mass</b>	The protein has a calculated MW of 158.6 kDa. The protein migrates as 150-190 kDa under reducing (R) condition (SDS-PAGE) due to glycosylation.

 Tel: 1-631-559-9269 1-516-512-3133

 Email: [info@creative-biomart.com](mailto:info@creative-biomart.com)  Fax: 1-631-938-8127

 45-1 Ramsey Road, Shirley, NY 11967, USA

<b>Endotoxin</b>	Less than 1.0 EU per µg by the LAL method.
<b>Purity</b>	>90% as determined by SDS-PAGE.
<b>Storage</b>	<p>For long term storage, the product should be stored at lyophilized state at -20°C or lower.</p> <p>Please avoid repeated freeze-thaw cycles.</p> <p>This product is stable after storage at:</p> <p>-20°C to -70°C for 12 months in lyophilized state;            -70°C for 3 months under sterile conditions after reconstitution.</p>
<b>Reconstitution</b>	It is recommended that sterile water be added to the vial to prepare a stock solution of 0.2 mg/ml. Centrifuge the vial at 4°C before opening to recover the entire contents.

## GENE INFORMATION

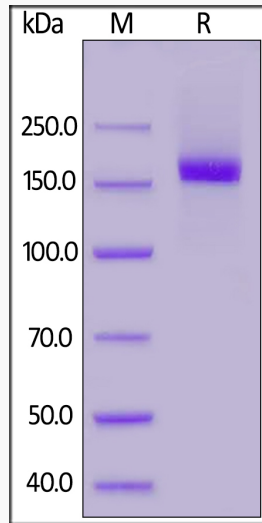
<b>Gene Name</b>	MRC1
<b>Official Symbol</b>	MRC1
<b>Synonyms</b>	MMR, CD206, hMR, MRC1, CLEC13D, CLEC13DL, MRC1L1
<b>Gene ID</b>	4360
<b>mRNA Refseq</b>	NM_002438.4
<b>Protein Refseq</b>	NP_002429.1
<b>MIM</b>	153618
<b>UniProt ID</b>	P22897

 Tel: 1-631-559-9269 1-516-512-3133

 Email: [info@creative-biomart.com](mailto:info@creative-biomart.com)  Fax: 1-631-938-8127

 45-1 Ramsey Road, Shirley, NY 11967, USA

**SDS-PAGE of MRC1-30H**



 Tel: 1-631-559-9269 1-516-512-3133

 Email: [info@creative-biomart.com](mailto:info@creative-biomart.com)  Fax: 1-631-938-8127

 45-1 Ramsey Road, Shirley, NY 11967, USA