

Recombinant Human MRC1 Protein, GST-tagged

Cat. No. MRC1-5534H Lot. No. (See product label)

SPECIFICATION

Product Overview	Human MRC1 partial ORF (NP_002429, 22 a.a. - 130 a.a.) recombinant protein with GST-tag at N-terminal.
Species	Human
Source	Wheat Germ
Description	<p>The recognition of complex carbohydrate structures on glycoproteins is an important part of several biological processes, including cell-cell recognition, serum glycoprotein turnover, and neutralization of pathogens. The protein encoded by this gene is a type I membrane receptor that mediates the endocytosis of glycoproteins by macrophages. The protein has been shown to bind high-mannose structures on the surface of potentially pathogenic viruses, bacteria, and fungi so that they can be neutralized by phagocytic engulfment. This gene is in close proximity to MRC1L1. The gene loci including this gene, MRC1L1, as well as LOC340843 and LOC340893, consist of two nearly identical, tandemly linked genomic regions, which are thought to be a part of a duplicated region. [provided by RefSeq</p>
Molecular Mass	37.73 kDa
AA Sequence	TRQFLIYNEDHKRCVDAVSPSAVQTAACNQDAESQKFRWVSESQIMSVAFKLCLGV PSKTDWVAITLYACDSKSEFQKWECKNDTLLGIKGEDLFFNYGNRQEKNIMLY
Applications	Enzyme-linked Immunoabsorbent Assay Western Blot (Recombinant protein)

 Tel: 1-631-559-9269 1-516-512-3133

 Email: info@creative-biomart.com  Fax: 1-631-938-8127

 45-1 Ramsey Road, Shirley, NY 11967, USA

	Antibody Production Protein Array
Notes	Best use within three months from the date of receipt of this protein.
Storage	Store at -80 centigrade. Aliquot to avoid repeated freezing and thawing.
Storage Buffer	50 mM Tris-HCl, 10 mM reduced Glutathione, pH=8.0 in the elution buffer.
GENE INFORMATION	
Gene Name	MRC1 mannose receptor, C type 1 [Homo sapiens]
Official Symbol	MRC1
Synonyms	MRC1; mannose receptor, C type 1; mannose receptor, C type 1 like 1 , MRC1L1; macrophage mannose receptor 1; bA541119.1; CD206; CLEC13D; CLEC13DL; mannose receptor, C type 1-like 1; C-type lectin domain family 13 member D; macrophage mannose receptor 1-like protein 1; MMR; MRC1L1; MGC181940;
Gene ID	4360
mRNA Refseq	NM_002438
Protein Refseq	NP_002429
MIM	153618
UniProt ID	P22897

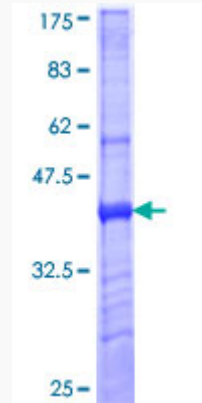
 Tel: 1-631-559-9269 1-516-512-3133

 Email: info@creative-biomart.com  Fax: 1-631-938-8127

 45-1 Ramsey Road, Shirley, NY 11967, USA

Quality Control

Testing:



12.5% SDS-PAGE Stained with Coomassie Blue.

 Tel: 1-631-559-9269 1-516-512-3133

 Email: info@creative-biomart.com  Fax: 1-631-938-8127

 45-1 Ramsey Road, Shirley, NY 11967, USA