

Recombinant Human MRC1 Protein (655-1213 aa), His-SUMO-tagged

Cat. No. MRC1-663H **Lot. No.** (See product label)

SPECIFICATION

Product Overview	Recombinant Human MRC1 Protein (655-1213 aa) is produced by E. coli expression system. This protein is fused with a 6xHis-SUMO tag at the N-terminal. Research Area: Immunology. Protein Description: Partial.
Species	Human
Source	E.coli
ProteinLength	655-1213 aa
Description	Mediates the endocytosis of glycoproteins by macrophages. Binds both sulfated and non-sulfated polysaccharide chains. Acts as phagocytic receptor for bacteria, fungi and other pathogens.
Form	Tris-based buffer, 50% glycerol
Molecular Mass	80.4 kDa
AA Sequence	RTSLCFKLYAKGKHEKKTWFESRDFCRALGGDLASINNKEEQQTWRLITASGSYHK LFWLGLTYGSPSEGFTWSDGSPVSYENWAYGEPNNYQNVEYCGELKGDPTMSWN DINCEHLNHWICQIQKGQTPKPEPTPAPQDNPPVTEDGWVIYKDYQYYFSKEKETM DNARAFCKRNFGDLVSIQSESEKFLWKYVNRNDAQSAYFIGLLISLDKKFAWMDGS KVDYVSWATGEPNFANEDENCVTMYSNSGFWDINCGYPNAFICQRHNSSINATTV MPTMPSVPSGCKEGWNFYSNKCFKIFGFMEERKNWQEARAKACIGFGGNLVSIGN

 Tel: 1-631-559-9269 1-516-512-3133

 Email: info@creative-biomart.com  Fax: 1-631-938-8127

 45-1 Ramsey Road, Shirley, NY 11967, USA

EKEQAFPTYHMKDSTFSAWTGLNDVNSEHTFLWTDGRGVHYTNWKGKYPGGRRS
 SLSYEDADCVVIIIGGASNEAGKWMDDTCDSKRGYICQTRSDPSLTNPPATIQTDFV
 KYGKSSSYSLMRQKFQWHEAETYCKLHNSLIASILDPYSNAFAWLQMETSNERVWIA
 LNSNLTDNQYTWTDKWRVRYTNWAADEPKLKSACVYLDLDGYWKTAHCNESFYFL
 CK

Purity > 90% as determined by SDS-PAGE.

Notes Repeated freezing and thawing is not recommended. Store working aliquots at 4 centigrade for up to one week.

Storage The shelf life is related to many factors, storage state, buffer ingredients, storage temperature and the stability of the protein itself. Generally, the shelf life of liquid form is 6 months at -20 centigrade/-80 centigrade. The shelf life of lyophilized form is 12 months at -20 centigrade/-80 centigrade.

Concentration A hardcopy of COA with concentration instruction is sent along with the products.

GENE INFORMATION

Gene Name [MRC1 mannose receptor, C type 1 \[Homo sapiens \]](#)

Official Symbol [MRC1](#)

Synonyms MRC1; bA541119.1; CD206; CLEC13D; CLEC13DL; MMR; MRC1L1; MGC181940;

Gene ID [4360](#)

mRNA Refseq [NM_002438](#)

Protein Refseq [NP_002429](#)

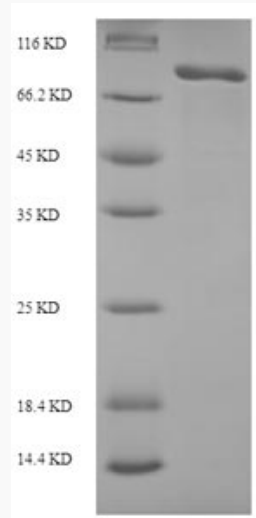
 Tel: 1-631-559-9269 1-516-512-3133

 Email: info@creative-biomart.com  Fax: 1-631-938-8127

 45-1 Ramsey Road, Shirley, NY 11967, USA

MIM 153618

UniProt ID P22897



(Tris-Glycine gel) Discontinuous SDS-PAGE (reduced) with 5% enrichment gel and 15% separation gel.

Tel: 1-631-559-9269 1-516-512-3133

Email: info@creative-biomart.com Fax: 1-631-938-8127

45-1 Ramsey Road, Shirley, NY 11967, USA