

Recombinant Human MRC2 Protein, His tagged

Cat. No. MRC2-001H Lot. No. (See product label)

SPECIFICATION

Product Overview	Recombinant Human MRC2 Protein (800-1059 aa) with C-His tag was expressed in Baculovirus-Insect cells.
Species	Human
Source	Insect cells
ProteinLength	800-1059 aa
Description	This gene encodes a member of the mannose receptor family of proteins that contain a fibronectin type II domain and multiple C-type lectin-like domains. The encoded protein plays a role in extracellular matrix remodeling by mediating the internalization and lysosomal degradation of collagen ligands. Expression of this gene may play a role in the tumorigenesis and metastasis of several malignancies including breast cancer, gliomas and metastatic bone disease.
Source	Insect cells
Species	Human
Tag	C-His
Molecular Weight	32 kDa
AA Sequence	MCDTQLDWICKIPRGTDVREPDDSPQGRREWLRFAQEAEYKFFFEHHSTWAQAQRIC

 Tel: 1-631-559-9269 1-516-512-3133

 Email: info@creative-biomart.com  Fax: 1-631-938-8127

 45-1 Ramsey Road, Shirley, NY 11967, USA

TWFQAELTSVHSQAELDFLSHNLQKFSRAQEQHWWIGLHTSESDGRFRWTDGSIIN
 FISWAPGKPRPVGKDKKCVYMTASREDWGDQRCLTALPYICKRSNVTKETQPPDLP
 TTALGGCPSDWIQFLNKCFQVQGQEPQSRVKWSEAQFSCEQQEAQLVTITNPLEQ
 AFITASLPNVTFDLWIGLHASQRDFQWVEQEPLMYANWAHHHHHHHHH

Endotoxin < 1 EU/μg by LAL

Purity > 90% by SDS-PAGE

Storage Store it under sterile conditions at -20 to -80 centigrade. It is recommended that the protein be aliquoted for optimal storage. Avoid repeated freeze-thaw cycles.

Storage Buffer Sterile PBS, pH7.4, 10% Glycerol, 5% Trehalose, 0.5% SKL

Concentration 1 mg/mL by Bradford

GENE INFORMATION

Gene Name [MRC2 mannose receptor, C type 2 \[Homo sapiens \(human\) \]](#)

Official Symbol [MRC2](#)

Synonyms MRC2; mannose receptor, C type 2; C-type mannose receptor 2; CD280; CLEC13E; ENDO180; KIAA0709; endocytic receptor 180; UPAR-associated protein; macrophage mannose receptor 2; C-type lectin domain family 13 member E; endocytic receptor (macrophage mannose receptor family); urokinase-type plasminogen activator receptor-associated protein; UPARAP; FLJ35911

Gene ID [9902](#)

mRNA Refseq [NM_006039](#)

 Tel: 1-631-559-9269 1-516-512-3133

 Email: info@creative-biomart.com  Fax: 1-631-938-8127

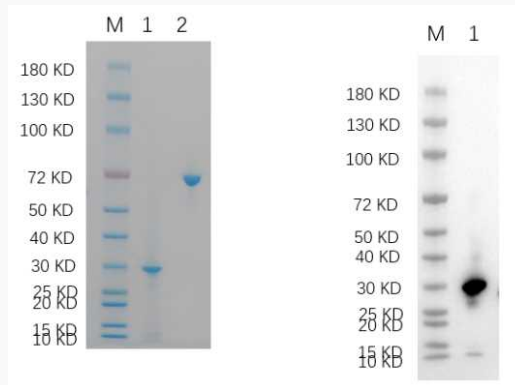
 45-1 Ramsey Road, Shirley, NY 11967, USA

Protein Refseq NP_006030

MIM 612264

UniProt ID Q9UBG0

**Reducing 4%-20%
SDS-PAGE (CBB
stained) and WB
(Anti-His Mouse
Monoclonal
Antibody) analysis
profiles of purified
MRC2.**



1. MRC2
2. BSA

 Tel: 1-631-559-9269 1-516-512-3133

 Email: info@creative-biomart.com  Fax: 1-631-938-8127

 45-1 Ramsey Road, Shirley, NY 11967, USA