

## Recombinant Human MRC2 protein, His-tagged

Cat. No. MRC2-1434H Lot. No. (See product label)

### SPECIFICATION

<b>Product Overview</b>	Recombinant Human MRC2 protein(Q9UBG0)(Gly31-Pro530), fused with C-terminal His tag, was expressed in HEK293.
<b>Species</b>	Human
<b>Source</b>	C-His
<b>ProteinLength</b>	Gly31-Pro530
<b>Tag</b>	C-His
<b>Form</b>	Lyophilized from 0.22µm filtered solution in PBS (pH 7.4). Normally 8% trehalose is added as protectant before lyophilization.
<b>Bio-activity</b>	
<b>Molecular Mass</b>	The protein has a predicted MW of 57.64 kDa. Due to glycosylation, the protein migrates to 65-75 kDa based on Tris-Bis PAGE result.
<b>Endotoxin</b>	Less than 1EU per µg by the LAL method.
<b>Purity</b>	> 95% as determined by Tris-Bis PAGE; > 95% as determined by HPLC.
<b>Storage</b>	Reconstituted protein stable at -80°C for 12 months, 4°C for 1 week. Use a manual defrost freezer and avoid repeated freeze-thaw cycles.

 Tel: 1-631-559-9269 1-516-512-3133

 Email: [info@creative-biomart.com](mailto:info@creative-biomart.com)  Fax: 1-631-938-8127

 45-1 Ramsey Road, Shirley, NY 11967, USA

**Reconstitution** Centrifuge tubes before opening. Reconstituting to a concentration more than 100 µg/ml is recommended. Dissolve the lyophilized protein in distilled water.

## GENE INFORMATION

**Gene Name** MRC2 mannose receptor, C type 2 [ Homo sapiens ]

**Official Symbol** MRC2

**Synonyms** MRC2; mannose receptor, C type 2; C-type mannose receptor 2; CD280; CLEC13E; ENDO180; KIAA0709; endocytic receptor 180; UPAR-associated protein; macrophage mannose receptor 2; C-type lectin domain family 13 member E; endocytic receptor (macrophage mannose receptor family); urokinase-type plasminogen activator receptor-associated protein; UPARAP; FLJ35911;

**Gene ID** 9902

**mRNA Refseq** NM\_006039

**Protein Refseq** NP\_006030

**MIM** 612264

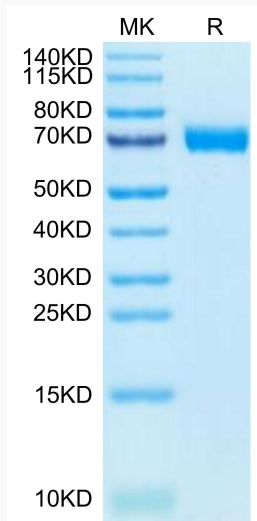
**UniProt ID** Q9UBG0

 Tel: 1-631-559-9269 1-516-512-3133

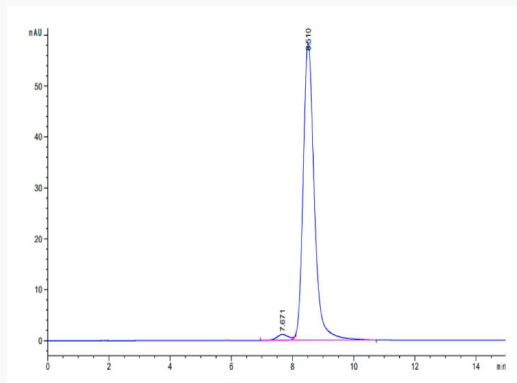
 Email: [info@creative-biomart.com](mailto:info@creative-biomart.com)  Fax: 1-631-938-8127

 45-1 Ramsey Road, Shirley, NY 11967, USA

**Tris-Bis PAGE**



**SEC-HPLC**



 Tel: 1-631-559-9269 1-516-512-3133

 Email: [info@creative-biomart.com](mailto:info@creative-biomart.com)  Fax: 1-631-938-8127

 45-1 Ramsey Road, Shirley, NY 11967, USA